

## Anti-PLXNA3 antibody

<b>Cat. No.</b>	ml162062
<b>Package</b>	25 µl/100 µl/200 µl
<b>Storage</b>	-20°C, pH7.4 PBS, 0.05% NaN <sub>3</sub> , 40% Glycerol

### Product overview

<b>Description</b>	Anti-PLXNA3 rabbit polyclonal antibody
<b>Applications</b>	ELISA, IHC
<b>Immunogen</b>	Synthetic peptide of human PLXNA3
<b>Reactivity</b>	Human, Mouse, Rat
<b>Content</b>	0.4 mg/ml
<b>Host species</b>	Rabbit
<b>Ig class</b>	Immunogen-specific rabbit IgG
<b>Purification</b>	Antigen affinity purification

### Target information

<b>Symbol</b>	PLXNA3
<b>Full name</b>	plexin A3
<b>Synonyms</b>	6.3; PLXN3; PLXN4; XAP-6; HSSEXGENE
<b>Swissprot</b>	P51805

### Target Background

This gene encodes a member of the plexin class of proteins. The encoded protein is a class 3 semaphorin receptor, and may be involved in cytoskeletal remodeling and as well as apoptosis. Studies of a similar gene in zebrafish suggest that it is important for axon pathfinding in the developing nervous system. This gene may be associated with tumor progression.

订购热线: 4008-898-798

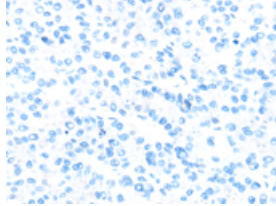
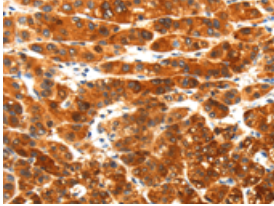
#### Applications

##### Immunohistochemistry

Predicted cell location: Cell membrane

Positive control: Human liver cancer

Recommended dilution: 30-150



The image on the left is immunohistochemistry of paraffin-embedded Human liver cancer tissue using ml162062(PLXNA3 Antibody) at dilution 1/25, on the right is treated with synthetic peptide. (Original magnification:  $\times 200$ )

##### ELISA

Recommended dilution: 2000-10000

联系电话: 4008-898-798, 021-61725725

联系QQ: 2881505695, 2881505696

邮箱: [mlbio\\_cn@yeah.net](mailto:mlbio_cn@yeah.net)

网址: [www.mlbio.cn](http://www.mlbio.cn)