

## Anti-PLXND1 antibody

<b>Cat. No.</b>	ml162066
<b>Package</b>	25 µl/100 µl/200 µl
<b>Storage</b>	-20°C, pH7.4 PBS, 0.05% NaN <sub>3</sub> , 40% Glycerol

### Product overview

<b>Description</b>	Anti-PLXND1 rabbit polyclonal antibody
<b>Applications</b>	ELISA, IHC
<b>Immunogen</b>	Synthetic peptide of human PLXND1
<b>Reactivity</b>	Human, Mouse
<b>Content</b>	0.3 mg/ml
<b>Host species</b>	Rabbit
<b>Ig class</b>	Immunogen-specific rabbit IgG
<b>Purification</b>	Antigen affinity purification

### Target information

<b>Symbol</b>	PLXND1
<b>Full name</b>	plexin D1
<b>Synonyms</b>	PLEXD1
<b>Swissprot</b>	Q9Y4D7

### Target Background

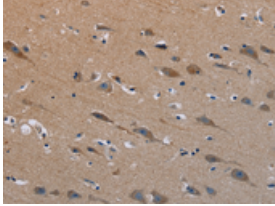
Cell surface receptor for SEMA4A and for class 3 semaphorins, such as SEMA3A, SEMA3C and SEMA3E. Plays an important role in cell-cell signaling, and in regulating the migration of a wide spectrum of cell types. Regulates the migration of thymocytes in the medulla. Regulates endothelial cell migration. Plays an important role in ensuring the specificity of synapse formation. Required for normal development of the heart and vasculature. By similarity. Mediates anti-angiogenic signaling in response to SEMA3E.

订购热线: 4008-898-798

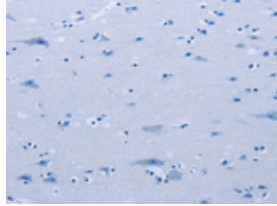
### Applications

#### Immunohistochemistry

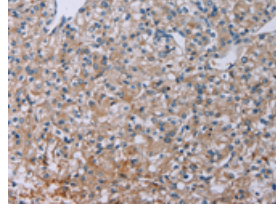
Predicted cell location: Cytoplasm  
Positive control: Human brain  
Recommended dilution: 25-100



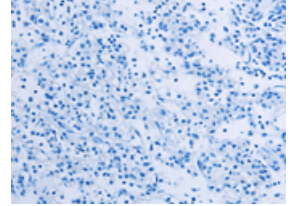
The image on the left is immunohistochemistry of paraffin-embedded Human brain tissue using ml162066(PLXND1 Antibody) at dilution 1/40, on the right is treated with synthetic peptide. (Original magnification: ×200)



Predicted cell location: Cytoplasm  
Positive control: Human prostate cancer  
Recommended dilution: 25-100



The image on the left is immunohistochemistry of paraffin-embedded Human prostate cancer tissue using ml162066(PLXND1 Antibody) at dilution 1/40, on the right is treated with synthetic peptide. (Original magnification: ×200)



#### ELISA

Recommended dilution: 1000-2000

联系电话: 4008-898-798, 021-61725725

联系QQ: 2881505695, 2881505696

邮箱: [mlbio\\_cn@yeah.net](mailto:mlbio_cn@yeah.net)

网址: [www.mlbio.cn](http://www.mlbio.cn)