

Anti-RAB8B antibody

Cat. No.	ml162094
Package	25 µl/100 µl/200 µl
Storage	-20°C, pH7.4 PBS, 0.05% NaN ₃ , 40% Glycerol

Product overview

Description	Anti-RAB8B rabbit polyclonal antibody
Applications	ELISA, IHC
Immunogen	Synthetic peptide of human RAB8B
Reactivity	Human, Mouse, Rat
Content	0.4 mg/ml
Host species	Rabbit
Ig class	Immunogen-specific rabbit IgG
Purification	Antigen affinity purification

Target information

Symbol	RAB8B
Full name	RAB8B, member RAS oncogene family
Synonyms	
Swissprot	Q92930

Target Background

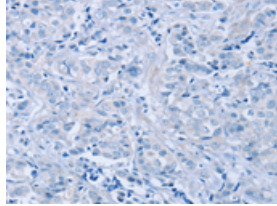
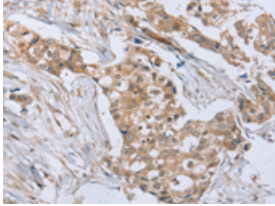
RAB proteins, like RAB8B, are low molecular mass monomeric GTPases that localize on the cytoplasmic surfaces of distinct membrane-bound organelles. RAB proteins function in intracellular vesicle transport by aiding in the docking and/or fusion of vesicles with their target membranes.

订购热线: 4008-898-798

Applications

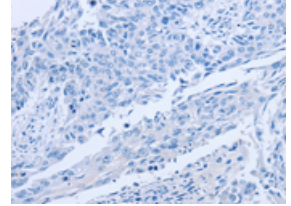
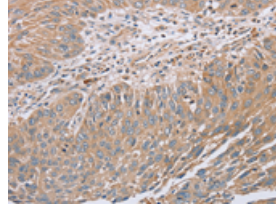
Immunohistochemistry

Predicted cell location: Cytoplasm and Cell membrane
Positive control: Human breast cancer
Recommended dilution: 30-150



The image on the left is immunohistochemistry of paraffin-embedded Human breast cancer tissue using ml162094(RAB8B Antibody) at dilution 1/45, on the right is treated with synthetic peptide. (Original magnification: ×200)

Predicted cell location: Cytoplasm and Cell membrane
Positive control: Human lung cancer
Recommended dilution: 30-150



The image on the left is immunohistochemistry of paraffin-embedded Human lung cancer tissue using ml162094(RAB8B Antibody) at dilution 1/45, on the right is treated with synthetic peptide. (Original magnification: ×200)

ELISA

Recommended dilution: 2000-5000

联系电话: 4008-898-798, 021-61725725

联系QQ: 2881505695, 2881505696

邮箱: mlbio_cn@yeah.net

网址: www.mlbio.cn