

Anti-RAB6C antibody

Cat. No.	ml162096
Package	25 µl/100 µl/200 µl
Storage	-20°C, pH7.4 PBS, 0.05% NaN ₃ , 40% Glycerol

Product overview

Description	Anti-RAB6C rabbit polyclonal antibody
Applications	ELISA, IHC
Immunogen	Synthetic peptide of human RAB6C
Reactivity	Human
Content	1 mg/ml
Host species	Rabbit
Ig class	Immunogen-specific rabbit IgG
Purification	Antigen affinity purification

Target information

Symbol	RAB6C
Full name	RAB6C, member RAS oncogene family
Synonyms	WTH3
Swissprot	Q9H0N0

Target Background

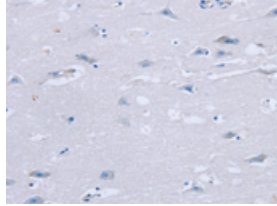
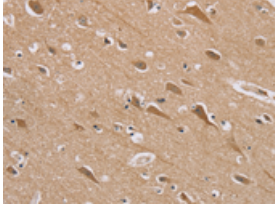
Ras-related protein Rab-6C is a protein that in humans is encoded by the RAB6C gene. May be involved in the regulation of centrosome duplication and cell cycle progression. Highest levels are found in fetal and adult brain, prostate, testis and spinal cord.

订购热线: 4008-898-798

Applications

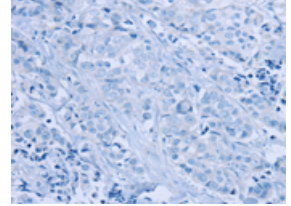
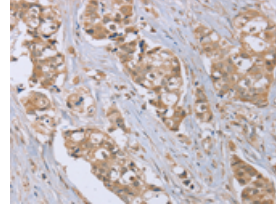
Immunohistochemistry

Predicted cell location: Cytoplasm and Nucleus
Positive control: Human brain
Recommended dilution: 50-200



The image on the left is immunohistochemistry of paraffin-embedded Human brain tissue using ml162096(RAB6C Antibody) at dilution 1/45, on the right is treated with synthetic peptide. (Original magnification: ×200)

Predicted cell location: Cytoplasm and Nucleus
Positive control: Human breast cancer
Recommended dilution: 50-200



The image on the left is immunohistochemistry of paraffin-embedded Human breast cancer tissue using ml162096(RAB6C Antibody) at dilution 1/45, on the right is treated with synthetic peptide. (Original magnification: ×200)

ELISA

Recommended dilution: 2000-5000

联系电话: 4008-898-798, 021-61725725

联系QQ: 2881505695, 2881505696

邮箱: mlbio_cn@yeah.net

网址: www.mlbio.cn