

## Anti-SYCP1 antibody

<b>Cat. No.</b>	ml162169
<b>Package</b>	25 µl/100 µl/200 µl
<b>Storage</b>	-20°C, pH7.4 PBS, 0.05% NaN <sub>3</sub> , 40% Glycerol

### Product overview

<b>Description</b>	Anti-SYCP1 rabbit polyclonal antibody
<b>Applications</b>	ELISA, IHC
<b>Immunogen</b>	Synthetic peptide of human SYCP1
<b>Reactivity</b>	Human
<b>Content</b>	0.5 mg/ml
<b>Host species</b>	Rabbit
<b>Ig class</b>	Immunogen-specific rabbit IgG
<b>Purification</b>	Antigen affinity purification

### Target information

<b>Symbol</b>	SYCP1
<b>Full name</b>	synaptonemal complex protein 1
<b>Synonyms</b>	CT8; SCP1; SCP-1; HOM-TES-14
<b>Swissprot</b>	Q15431

### Target Background

The synaptonemal complex protein 1 (SCP-1), also known as SYCP1(A), SYN1(I) and HOM-TES-14, is a protein product of human chromosome 1p13-p12. SCP-1 is a major component of the transverse filaments of synaptonemal complexes and functions by pairing homologous chromosomes during meiotic prophase in spermatocytes, which is an essential step for the generation of haploid cells in meiosis I. SCP-1 is expressed in the testis, adult brain, some malignant gliomas, breast, renal cell and ovarian cancer. SCP-1 is known to be selectively expressed during the meiotic prophase of spermatocytes and shows cell cycle phase-independent nuclear expression in cancer cells.

订购热线: 4008-898-798

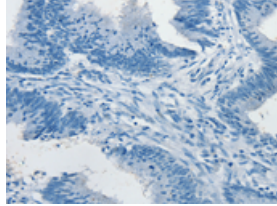
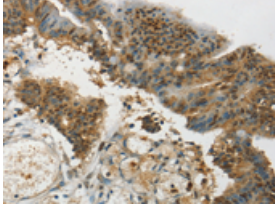
#### Applications

##### Immunohistochemistry

Predicted cell location: Nucleus

Positive control: Human colon cancer

Recommended dilution: 25-100



The image on the left is immunohistochemistry of paraffin-embedded Human colon cancer tissue using ml162169(SYCP1 Antibody) at dilution 1/35, on the right is treated with synthetic peptide. (Original magnification: ×200)

##### ELISA

Recommended dilution: 1000-2000

联系电话: 4008-898-798, 021-61725725

联系QQ: 2881505695, 2881505696

邮箱: [mlbio\\_cn@yeah.net](mailto:mlbio_cn@yeah.net)

网址: [www.mlbio.cn](http://www.mlbio.cn)