

Anti-SLC26A6 antibody

Cat. No.	ml162228
Package	25 µl/100 µl/200 µl
Storage	-20°C, pH7.4 PBS, 0.05% NaN ₃ , 40% Glycerol

Product overview

Description	Anti-SLC26A6 rabbit polyclonal antibody
Applications	ELISA, IHC
Immunogen	Synthetic peptide of human SLC26A6
Reactivity	Human
Content	0.5 mg/ml
Host species	Rabbit
Ig class	Immunogen-specific rabbit IgG
Purification	Antigen affinity purification

Target information

Symbol	SLC26A6
Full name	solute carrier family 26 (anion exchanger), member 6
Synonyms	
Swissprot	Q9BXS9

Target Background

This gene belongs to the solute carrier 26 family, whose members encode anion transporter proteins. This particular family member encodes a protein involved in transporting chloride, oxalate, sulfate and bicarbonate. Alternatively spliced transcript variants encoding distinct isoforms have been described.

订购热线: 4008-898-798

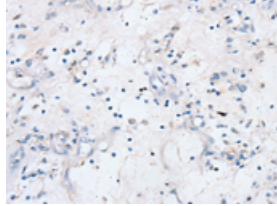
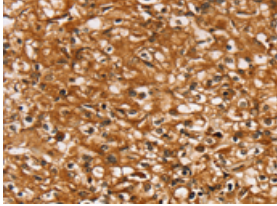
Applications

Immunohistochemistry

Predicted cell location: Cytoplasm or Cell membrane

Positive control: Human prostate cancer

Recommended dilution: 25-100



The image on the left is immunohistochemistry of paraffin-embedded Human prostate cancer tissue using ml162228(SLC26A6 Antibody) at dilution 1/20, on the right is treated with synthetic peptide. (Original magnification: $\times 200$)

ELISA

Recommended dilution: 1000-2000

联系电话: 4008-898-798, 021-61725725

联系QQ: 2881505695, 2881505696

邮箱: mlbio_cn@yeah.net

网址: www.mlbio.cn