

Anti-SLC44A1 antibody

Cat. No.	ml162244
Package	25 µl/100 µl/200 µl
Storage	-20°C, pH7.4 PBS, 0.05% NaN ₃ , 40% Glycerol

Product overview

Description	Anti-SLC44A1 rabbit polyclonal antibody
Applications	ELISA, IHC
Immunogen	Synthetic peptide of human SLC44A1
Reactivity	Human, Mouse, Rat
Content	0.5 mg/ml
Host species	Rabbit
Ig class	Immunogen-specific rabbit IgG
Purification	Antigen affinity purification

Target information

Symbol	SLC44A1
Full name	solute carrier family 44 (choline transporter), member 1
Synonyms	CD92; CTL1; CDW92; CHTL1
Swissprot	Q8WWI5

Target Background

CD92, also known as SLC44A1 (solute carrier family 44, member 1), CDw92 or CTL1 (choline transporter-like protein 1), is a 657 amino acid multi-pass membrane protein that belongs to the choline transporter-like family of solute carrier proteins. Expressed in cells that are associated with the hematopoietic system, CD92 functions as a choline transporter that may be involved in myelin production, as well as in membrane synthesis. Human CD92 shares 96% sequence homology with its mouse counterpart, suggesting a conserved role between species. Three isoforms of CD92 exist due to alternative splicing events.

订购热线: 4008-898-798

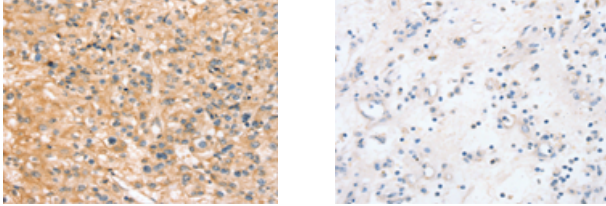
Applications

Immunohistochemistry

Predicted cell location: Cytoplasm or Cell membrane

Positive control: Human prostate cancer

Recommended dilution: 25-100



The image on the left is immunohistochemistry of paraffin-embedded Human prostate cancer tissue using ml162244(SLC44A1 Antibody) at dilution 1/20, on the right is treated with synthetic peptide. (Original magnification: $\times 200$)

ELISA

Recommended dilution: 1000-2000

联系电话: 4008-898-798, 021-61725725

联系QQ: 2881505695, 2881505696

邮箱: mlbio_cn@yeah.net

网址: www.mlbio.cn