

Anti-SLC5A6 antibody

Cat. No.	ml162250
Package	25 µl/100 µl/200 µl
Storage	-20°C, pH7.4 PBS, 0.05% NaN ₃ , 40% Glycerol

Product overview

Description	Anti-SLC5A6 rabbit polyclonal antibody
Applications	ELISA, IHC
Immunogen	Synthetic peptide of human SLC5A6
Reactivity	Human
Content	0.3 mg/ml
Host species	Rabbit
Ig class	Immunogen-specific rabbit IgG
Purification	Antigen affinity purification

Target information

Symbol	SLC5A6
Full name	solute carrier family 5 (sodium/multivitamin and iodide cotransporter), member 6
Synonyms	SMVT
Swissprot	Q9Y289

Target Background

SLC5A6 is a 635 amino acid protein that belongs to the sodium-coupled glucose transporter family. SMVT contains 12 putative transmembrane domains with the N and C termini both facing towards the cytoplasm. Its function is to transport the essential vitamins pantothenate, biotin, and the metabolite lipoate into cells of various human tissues. Biotin, also known as vitamin B6, is important in synthesizing fatty acids gluconeogenesis, and metabolizing leucine, while pantothenate, or vitamin B5, is critical in the metabolism and synthesis of carbohydrates, proteins, and fats. Lipoate is involved in oxidative metabolism.

订购热线: 4008-898-798

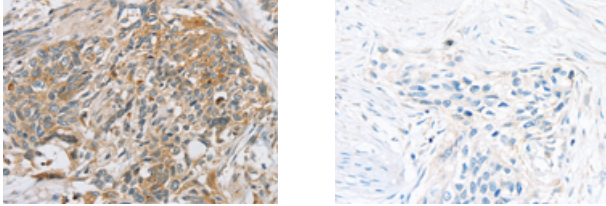
Applications

Immunohistochemistry

Predicted cell location: Cytoplasm or Cell membrane

Positive control: Human esophagus cancer

Recommended dilution: 25-100



The image on the left is immunohistochemistry of paraffin-embedded Human esophagus cancer tissue using ml162250(SLC5A6 Antibody) at dilution 1/20, on the right is treated with synthetic peptide. (Original magnification: $\times 200$)

ELISA

Recommended dilution: 1000-2000

联系电话: 4008-898-798, 021-61725725

联系QQ: 2881505695, 2881505696

邮箱: mlbio_cn@yeah.net

网址: www.mlbio.cn