

Anti-SLC8A3 antibody

Cat. No.	ml162256
Package	25 µl/100 µl/200 µl
Storage	-20°C, pH7.4 PBS, 0.05% NaN ₃ , 40% Glycerol

Product overview

Description	Anti-SLC8A3 rabbit polyclonal antibody
Applications	ELISA, IHC
Immunogen	Synthetic peptide of human SLC8A3
Reactivity	Human, Rat
Content	0.8 mg/ml
Host species	Rabbit
Ig class	Immunogen-specific rabbit IgG
Purification	Antigen affinity purification

Target information

Symbol	SLC8A3
Full name	solute carrier family 8 (sodium/calcium exchanger), member 3
Synonyms	NCX3
Swissprot	P57103

Target Background

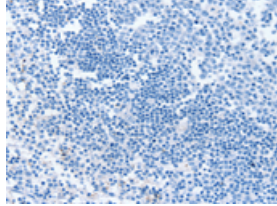
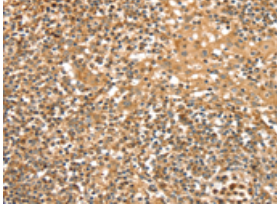
This gene encodes a member of the sodium/calcium exchanger integral membrane protein family. Na⁺/Ca²⁺ exchange proteins are involved in maintaining Ca²⁺ homeostasis in a wide variety of cell types. The protein is regulated by intracellular calcium ions and is found in both the plasma membrane and intracellular organellar membranes, where exchange of Na⁺ for Ca²⁺ occurs in an electrogenic manner. Alternative splicing has been observed for this gene and multiple variants have been described.

订购热线: 4008-898-798

Applications

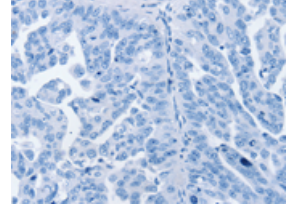
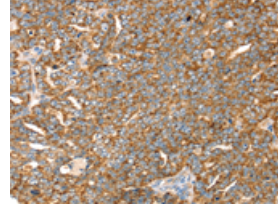
Immunohistochemistry

Predicted cell location: Cytoplasm or Cell membrane
Positive control: Human tonsil
Recommended dilution: 25-100



The image on the left is immunohistochemistry of paraffin-embedded Human tonsil tissue using ml162256(SLC8A3 Antibody) at dilution 1/35, on the right is treated with synthetic peptide. (Original magnification: $\times 200$)

Predicted cell location: Cytoplasm or Cell membrane
Positive control: Human cervical cancer
Recommended dilution: 25-100



The image on the left is immunohistochemistry of paraffin-embedded Human cervical cancer tissue using ml162256(SLC8A3 Antibody) at dilution 1/35, on the right is treated with synthetic peptide. (Original magnification: $\times 200$)

ELISA

Recommended dilution: 1000-2000

联系电话: 4008-898-798, 021-61725725

联系QQ: 2881505695, 2881505696

邮箱: mlbio_cn@yeah.net

网址: www.mlbio.cn