

## Anti-SMAGP antibody

<b>Cat. No.</b>	ml162270
<b>Package</b>	25 µl/100 µl/200 µl
<b>Storage</b>	-20°C, pH7.4 PBS, 0.05% NaN <sub>3</sub> , 40% Glycerol

### Product overview

<b>Description</b>	Anti-SMAGP rabbit polyclonal antibody
<b>Applications</b>	ELISA, IHC
<b>Immunogen</b>	Synthetic peptide of human SMAGP
<b>Reactivity</b>	Human, Mouse, Rat
<b>Content</b>	1.6 mg/ml
<b>Host species</b>	Rabbit
<b>Ig class</b>	Immunogen-specific rabbit IgG
<b>Purification</b>	Antigen affinity purification

### Target information

<b>Symbol</b>	SMAGP
<b>Full name</b>	small cell adhesion glycoprotein
<b>Synonyms</b>	hSMAGP
<b>Swissprot</b>	Q0VAQ4

### Target Background

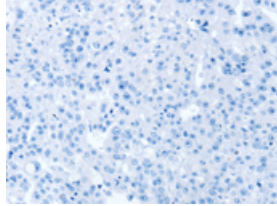
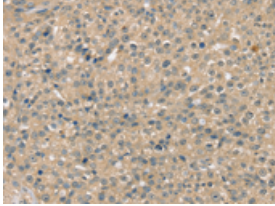
SMAGP (small transmembrane and glycosylated protein) is a 97 amino acid single-pass type III membrane protein that localizes to the membrane of cytoplasmic vesicles. Existing as a murine-specific protein, SMAGP is thought to play a role in epithelial cell-cell contacts and, via its ability to control cell adhesion, may be involved in tumor formation, as well as overall tumor invasiveness and metastasis. SMAGP is subject to post-translational O-glycosylation which is thought to be modified with sialic acid residues. The gene encoding SMAGP maps to murine chromosome 15.

订购热线: 4008-898-798

### Applications

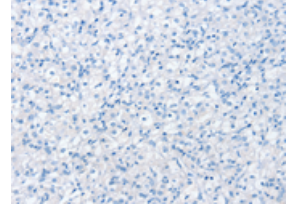
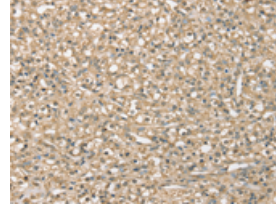
#### Immunohistochemistry

Predicted cell location: Cytoplasm and Cell membrane  
Positive control: Human breast cancer  
Recommended dilution: 25-100



The image on the left is immunohistochemistry of paraffin-embedded Human breast cancer tissue using ml162270(SMAGP Antibody) at dilution 1/40, on the right is treated with synthetic peptide. (Original magnification: ×200)

Predicted cell location: Cytoplasm and Cell membrane  
Positive control: Human prostate cancer  
Recommended dilution: 25-100



The image on the left is immunohistochemistry of paraffin-embedded Human prostate cancer tissue using ml162270(SMAGP Antibody) at dilution 1/40, on the right is treated with synthetic peptide. (Original magnification: ×200)

#### ELISA

Recommended dilution: 1000-2000

联系电话: 4008-898-798, 021-61725725

联系QQ: 2881505695, 2881505696

邮箱: [mlbio\\_cn@yeah.net](mailto:mlbio_cn@yeah.net)

网址: [www.mlbio.cn](http://www.mlbio.cn)