

Anti-SNX25 antibody

Cat. No.	ml162286
Package	25 µl/100 µl/200 µl
Storage	-20°C, pH7.4 PBS, 0.05% NaN ₃ , 40% Glycerol

Product overview

Description	Anti-SNX25 rabbit polyclonal antibody
Applications	ELISA, IHC
Immunogen	Synthetic peptide of human SNX25
Reactivity	Human, Mouse
Content	0.5 mg/ml
Host species	Rabbit
Ig class	Immunogen-specific rabbit IgG
Purification	Antigen affinity purification

Target information

Symbol	SNX25
Full name	sorting nexin 25
Synonyms	SBBI31; MSTP043
Swissprot	Q9H3E2

Target Background

SNX25 (sorting nexin 25), also known as SBBI31 or MSTP043, is an 840 amino acid protein suggested to function in several stages of intracellular trafficking. A member of the sorting nexin family, SNX25 contains one PX (phox homology) domain, an RGS domain and one PXA domain. May be involved in several stages of intracellular trafficking.

订购热线: 4008-898-798

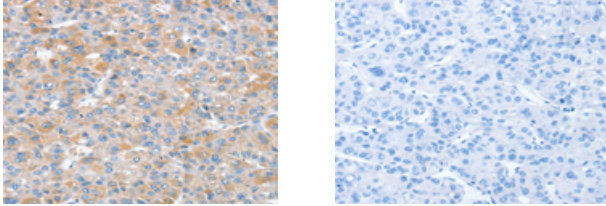
Applications

Immunohistochemistry

Predicted cell location: Cytoplasm

Positive control: Human liver cancer

Recommended dilution: 25-100



The image on the left is immunohistochemistry of paraffin-embedded Human liver cancer tissue using ml162286(SNX25 Antibody) at dilution 1/35, on the right is treated with synthetic peptide. (Original magnification: $\times 200$)

ELISA

Recommended dilution: 1000-2000

联系电话: 4008-898-798, 021-61725725

联系QQ: 2881505695, 2881505696

邮箱: mlbio_cn@yeah.net

网址: www.mlbio.cn