

## Anti-SPATA5L1 antibody

<b>Cat. No.</b>	ml162298
<b>Package</b>	25 µl/100 µl/200 µl
<b>Storage</b>	-20°C, pH7.4 PBS, 0.05% NaN <sub>3</sub> , 40% Glycerol

### Product overview

<b>Description</b>	Anti-SPATA5L1 rabbit polyclonal antibody
<b>Applications</b>	ELISA, IHC
<b>Immunogen</b>	Synthetic peptide of human SPATA5L1
<b>Reactivity</b>	Human
<b>Content</b>	0.2 mg/ml
<b>Host species</b>	Rabbit
<b>Ig class</b>	Immunogen-specific rabbit IgG
<b>Purification</b>	Antigen affinity purification

### Target information

<b>Symbol</b>	SPATA5L1
<b>Full name</b>	spermatogenesis associated 5-like 1
<b>Synonyms</b>	
<b>Swissprot</b>	Q9BVQ7

### Target Background

SPATA5L1 (spermatogenesis-associated protein 5-like protein 1) is a 753 amino acid protein belonging to the AAA ATPase family and AFG2 subfamily. Single nucleotide polymorphisms (SNPs) present in SPATA5L1 at the glycine amidinotransferase (GATM)-SPATA5L1 locus have been found to correlate with glomerular filtration rate (GFR), having significant implications for kidney disease research. SPATA5L1 localizes to cytoplasm and exists as three alternatively spliced isoforms.

订购热线: 4008-898-798

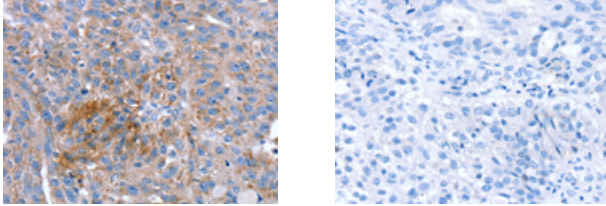
#### Applications

##### Immunohistochemistry

Predicted cell location: Cytoplasm

Positive control: Human breast cancer

Recommended dilution: 10-50



The image on the left is immunohistochemistry of paraffin-embedded Human breast cancer tissue using ml162298(SPATA5L1 Antibody) at dilution 1/20, on the right is treated with synthetic peptide. (Original magnification:  $\times 200$ )

##### ELISA

Recommended dilution: 2000-5000

联系电话: 4008-898-798, 021-61725725

联系QQ: 2881505695, 2881505696

邮箱: [mlbio\\_cn@yeah.net](mailto:mlbio_cn@yeah.net)

网址: [www.mlbio.cn](http://www.mlbio.cn)