

Anti-SPON1 antibody

Cat. No.	ml162300
Package	25 µl/100 µl/200 µl
Storage	-20°C, pH7.4 PBS, 0.05% NaN ₃ , 40% Glycerol

Product overview

Description	Anti-SPON1 rabbit polyclonal antibody
Applications	ELISA, IHC
Immunogen	Synthetic peptide of human SPON1
Reactivity	Human, Mouse, Rat
Content	0.3 mg/ml
Host species	Rabbit
Ig class	Immunogen-specific rabbit IgG
Purification	Antigen affinity purification

Target information

Symbol	SPON1
Full name	spondin 1, extracellular matrix protein
Synonyms	f-spondin; VSGP/F-spondin
Swissprot	Q9HCB6

Target Background

F-Spondin, also designated Spondin-1 or vascular smooth muscle growth-promoting factor, is a member of the subgroup of the Thrombospondin type 1 class molecules. F-Spondin is a secreted, extracellular matrix-attached protein which patterns axonal trajectories by promoting adhesion and outgrowth of commissural axons, in addition to inhibiting outgrowth of motor axons.

订购热线: 4008-898-798

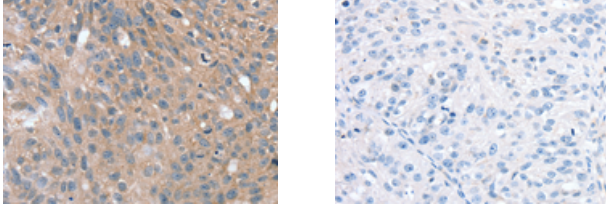
Applications

Immunohistochemistry

Predicted cell location: Cytoplasm

Positive control: Human breast cancer

Recommended dilution: 10-50



The image on the left is immunohistochemistry of paraffin-embedded Human breast cancer tissue using ml162300(SPON1 Antibody) at dilution 1/25, on the right is treated with synthetic peptide. (Original magnification: $\times 200$)

ELISA

Recommended dilution: 1000-2000

联系电话: 4008-898-798, 021-61725725

联系QQ: 2881505695, 2881505696

邮箱: mlbio_cn@yeah.net

网址: www.mlbio.cn