

Anti-STS antibody

Cat. No.	ml162305
Package	25 µl/100 µl/200 µl
Storage	-20°C, pH7.4 PBS, 0.05% NaN ₃ , 40% Glycerol

Product overview

Description	Anti-STS rabbit polyclonal antibody
Applications	ELISA, IHC
Immunogen	Synthetic peptide of human STS
Reactivity	Human
Content	0.3 mg/ml
Host species	Rabbit
Ig class	Immunogen-specific rabbit IgG
Purification	Antigen affinity purification

Target information

Symbol	STS
Full name	steroid sulfatase (microsomal), isozyme S
Synonyms	ES; ASC; XLI; ARSC; SSDD; ARSC1
Swissprot	P08842

Target Background

This gene encodes a multi-pass membrane protein that is localized to the endoplasmic reticulum. It belongs to the sulfatase family and hydrolyzes several 3-beta-hydroxysteroid sulfates, which serve as metabolic precursors for estrogens, androgens, and cholesterol. Mutations in this gene are associated with X-linked ichthyosis (XLI). Alternatively spliced transcript variants resulting from the use of different promoters have been described for this gene (PMID:17601726).

订购热线: 4008-898-798

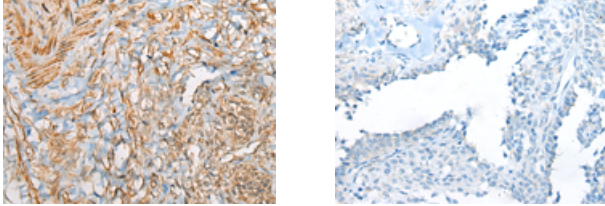
Applications

Immunohistochemistry

Predicted cell location: Cytoplasm

Positive control: Human ovarian cancer

Recommended dilution: 10-50



The image on the left is immunohistochemistry of paraffin-embedded Human ovarian cancer tissue using ml162305(STS Antibody) at dilution 1/25, on the right is treated with synthetic peptide. (Original magnification: $\times 200$)

ELISA

Recommended dilution: 500-1000

联系电话: 4008-898-798, 021-61725725

联系QQ: 2881505695, 2881505696

邮箱: mlbio_cn@yeah.net

网址: www.mlbio.cn