

Anti-TMSB10 antibody

| | |
|-----------------|---|
| Cat. No. | ml162332 |
| Package | 25 µl/100 µl/200 µl |
| Storage | -20°C, pH7.4 PBS, 0.05% NaN ₃ , 40% Glycerol |

Product overview

| | |
|---------------------|--|
| Description | Anti-TMSB10 rabbit polyclonal antibody |
| Applications | ELISA, IHC |
| Immunogen | Synthetic peptide of human TMSB10 |
| Reactivity | Human, Mouse, Rat |
| Content | 0.5 mg/ml |
| Host species | Rabbit |
| Ig class | Immunogen-specific rabbit IgG |
| Purification | Antigen affinity purification |

Target information

| | |
|------------------|------------------|
| Symbol | TMSB10 |
| Full name | thymosin beta 10 |
| Synonyms | TB10; MIG12 |
| Swissprot | P63313 |

Target Background

Thymosin beta-10 plays an important role in the organization of the cytoskeleton. Thymosin beta-10 binds to and sequesters actin monomers (G actin) and therefore inhibits actin polymerization. The expression of thymosin beta-10 dramatically decreases after birth.

订购热线: 4008-898-798

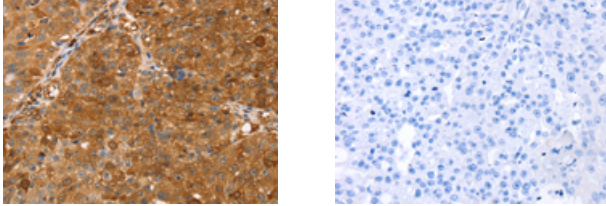
Applications

Immunohistochemistry

Predicted cell location: Cytoplasm

Positive control: Human breast cancer

Recommended dilution: 30-150



The image on the left is immunohistochemistry of paraffin-embedded Human breast cancer tissue using ml162332(TMSB10 Antibody) at dilution 1/35, on the right is treated with synthetic peptide. (Original magnification: $\times 200$)

ELISA

Recommended dilution: 2000-10000

联系电话: 4008-898-798, 021-61725725

联系QQ: 2881505695, 2881505696

邮箱: mlbio_cn@yeah.net

网址: www.mlbio.cn