

## Anti-TRIM33 antibody

<b>Cat. No.</b>	ml162362
<b>Package</b>	25 µl/100 µl/200 µl
<b>Storage</b>	-20°C, pH7.4 PBS, 0.05% NaN <sub>3</sub> , 40% Glycerol

### Product overview

<b>Description</b>	Anti-TRIM33 rabbit polyclonal antibody
<b>Applications</b>	ELISA, IHC
<b>Immunogen</b>	Synthetic peptide of human TRIM33
<b>Reactivity</b>	Human, Mouse
<b>Content</b>	0.9 mg/ml
<b>Host species</b>	Rabbit
<b>Ig class</b>	Immunogen-specific rabbit IgG
<b>Purification</b>	Antigen affinity purification

### Target information

<b>Symbol</b>	TRIM33
<b>Full name</b>	tripartite motif containing 33
<b>Synonyms</b>	ECTO; PTC7; RFG7; TF1G; TIF1G; TIFGAMMA; TIF1GAMMA
<b>Swissprot</b>	Q9UPN9

### Target Background

The protein encoded by this gene is thought to be a transcriptional corepressor. However, molecules that interact with this protein have not yet been identified. The protein is a member of the tripartite motif family. This motif includes three zinc-binding domains, a RING, a B-box type 1 and a B-box type 2, and a coiled-coil region. Three alternatively spliced transcript variants for this gene have been described, however, the full-length nature of one variant has not been determined.

订购热线: 4008-898-798

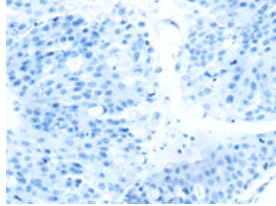
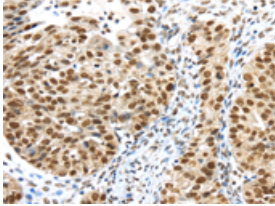
### Applications

#### Immunohistochemistry

Predicted cell location: Nucleus

Positive control: Human breast cancer

Recommended dilution: 30-150

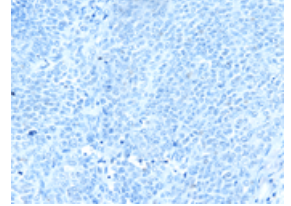
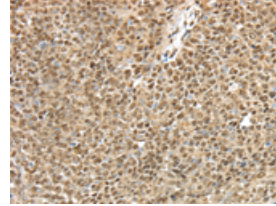


The image on the left is immunohistochemistry of paraffin-embedded Human breast cancer tissue using ml162362(TRIM33 Antibody) at dilution 1/40, on the right is treated with synthetic peptide. (Original magnification:  $\times 200$ )

Predicted cell location: Nucleus

Positive control: Human ovarian cancer

Recommended dilution: 30-150



The image on the left is immunohistochemistry of paraffin-embedded Human ovarian cancer tissue using ml162362(TRIM33 Antibody) at dilution 1/40, on the right is treated with synthetic peptide. (Original magnification:  $\times 200$ )

#### ELISA

Recommended dilution: 2000-10000

联系电话: 4008-898-798, 021-61725725

联系QQ: 2881505695, 2881505696

邮箱: [mlbio\\_cn@yeah.net](mailto:mlbio_cn@yeah.net)

网址: [www.mlbio.cn](http://www.mlbio.cn)