

## Anti-ZNF185 antibody

<b>Cat. No.</b>	ml162641
<b>Package</b>	25 µl/100 µl/200 µl
<b>Storage</b>	-20°C, pH7.4 PBS, 0.05% NaN <sub>3</sub> , 40% Glycerol

### Product overview

<b>Description</b>	Anti-ZNF185 rabbit polyclonal antibody
<b>Applications</b>	ELISA, IHC
<b>Immunogen</b>	Synthetic peptide of human ZNF185
<b>Reactivity</b>	Human
<b>Content</b>	0.6 mg/ml
<b>Host species</b>	Rabbit
<b>Ig class</b>	Immunogen-specific rabbit IgG
<b>Purification</b>	Antigen affinity purification

### Target information

<b>Symbol</b>	ZNF185
<b>Full name</b>	zinc finger protein 185 with LIM domain
<b>Synonyms</b>	SCELL
<b>Swissprot</b>	O15231

### Target Background

Zinc-finger proteins bind nucleic acids and play important roles in various cellular functions, including cell proliferation, differentiation, and apoptosis. This gene encodes a LIM-domain zinc finger protein. The LIM domain is composed of two contiguous zinc finger domains, separated by a two-amino acid residue hydrophobic linker. The LIM domain mediates protein:protein interactions. Multiple alternatively spliced transcript variants encoding different isoforms have been identified.

订购热线: 4008-898-798

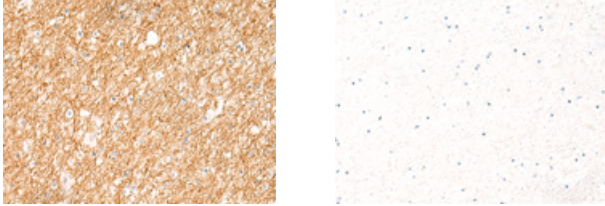
#### Applications

##### Immunohistochemistry

Predicted cell location: Cytoplasm

Positive control: Human brain

Recommended dilution: 40-200



The image on the left is immunohistochemistry of paraffin-embedded Human brain tissue using ml162641(ZNF185 Antibody) at dilution 1/20, on the right is treated with synthetic peptide. (Original magnification:  $\times 200$ )

##### ELISA

Recommended dilution: 5000-10000

联系电话: 4008-898-798, 021-61725725

联系QQ: 2881505695, 2881505696

邮箱: [mlbio\\_cn@yeah.net](mailto:mlbio_cn@yeah.net)

网址: [www.mlbio.cn](http://www.mlbio.cn)