

Anti-MUC7 antibody

Cat. No.	ml162653
Package	25 µl/100 µl/200 µl
Storage	-20°C, pH7.4 PBS, 0.05% NaN ₃ , 40% Glycerol

Product overview

Description	Anti-MUC7 rabbit polyclonal antibody
Applications	ELISA, IHC
Immunogen	Synthetic peptide of human MUC7
Reactivity	Human
Content	0.6 mg/ml
Host species	Rabbit
Ig class	Immunogen-specific rabbit IgG
Purification	Antigen affinity purification

Target information

Symbol	MUC7
Full name	mucin 7, secreted
Synonyms	MG2
Swissprot	Q8TAX7

Target Background

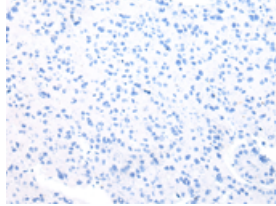
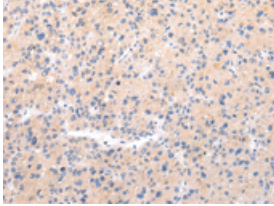
This gene encodes a small salivary mucin, which is thought to play a role in facilitating the clearance of bacteria in the oral cavity and to aid in mastication, speech, and swallowing. The central domain of this glycoprotein contains tandem repeats, each composed of 23 amino acids. This antimicrobial protein has antibacterial and antifungal activity. The most common allele contains 6 repeats, and some alleles may be associated with susceptibility to asthma. Alternatively spliced transcript variants with different 5' UTR, but encoding the same protein, have been found for this gene.

订购热线: 4008-898-798

Applications

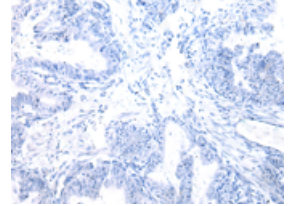
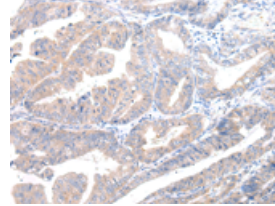
Immunohistochemistry

Predicted cell location: Cytoplasm and Cell membrane
Positive control: Human liver cancer
Recommended dilution: 20-100



The image on the left is immunohistochemistry of paraffin-embedded Human liver cancer tissue using ml162653(MUC7 Antibody) at dilution 1/20, on the right is treated with synthetic peptide. (Original magnification: ×200)

Predicted cell location: Cytoplasm and Cell membrane
Positive control: Human esophagus cancer
Recommended dilution: 20-100



The image on the left is immunohistochemistry of paraffin-embedded Human esophagus cancer tissue using ml162653(MUC7 Antibody) at dilution 1/20, on the right is treated with synthetic peptide. (Original magnification: ×200)

ELISA

Recommended dilution: 2000-5000

联系电话: 4008-898-798, 021-61725725

联系QQ: 2881505695, 2881505696

邮箱: mlbio_cn@yeah.net

网址: www.mlbio.cn