

## Anti-AQP11 antibody

**Cat. No.** ml162663  
**Package** 25 µl/100 µl/200 µl  
**Storage** -20°C, pH7.4 PBS, 0.05% NaN<sub>3</sub>, 40% Glycerol

### Product overview

**Description** Anti-AQP11 rabbit polyclonal antibody  
**Applications** ELISA, IHC  
**Immunogen** Synthetic peptide of human AQP11  
**Reactivity** Human  
**Content** 0.7 mg/ml  
**Host species** Rabbit  
**Ig class** Immunogen-specific rabbit IgG  
**Purification** Antigen affinity purification

### Target information

**Symbol** AQP11  
**Full name** aquaporin 11  
**Synonyms** AQPX1  
**Swissprot** Q8NBQ7

### Target Background

Aquaporins facilitate the transport of water and small neutral solutes across cell membranes.

订购热线: 4008-898-798

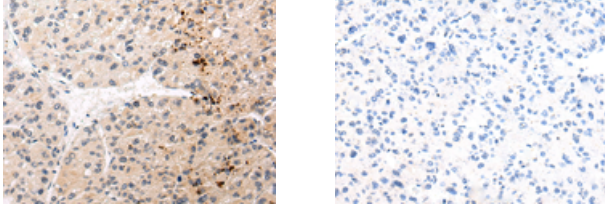
#### Applications

##### Immunohistochemistry

Predicted cell location: Cytoplasm

Positive control: Human liver cancer

Recommended dilution: 20-100



The image on the left is immunohistochemistry of paraffin-embedded Human liver cancer tissue using ml162663(AQP11 Antibody) at dilution 1/30, on the right is treated with synthetic peptide. (Original magnification: ×200)

##### ELISA

Recommended dilution: 2000-5000

联系电话: 4008-898-798, 021-61725725

联系QQ: 2881505695, 2881505696

邮箱: [mlbio\\_cn@yeah.net](mailto:mlbio_cn@yeah.net)

网址: [www.mlbio.cn](http://www.mlbio.cn)