

Anti-CTBP1 antibody

Cat. No.	ml162698
Package	25 µl/100 µl/200 µl
Storage	-20°C, pH7.4 PBS, 0.05% NaN ₃ , 40% Glycerol

Product overview

Description	Anti-CTBP1 rabbit polyclonal antibody
Applications	ELISA, WB, IHC
Immunogen	Synthetic peptide of human CTBP1
Reactivity	Human, Mouse, Rat
Content	1.9 mg/ml
Host species	Rabbit
Ig class	Immunogen-specific rabbit IgG
Purification	Antigen affinity purification

Target information

Symbol	CTBP1
Full name	C-terminal binding protein 1
Synonyms	BARS
Swissprot	Q13363

Target Background

This gene encodes a protein that binds to the C-terminus of adenovirus E1A proteins. This phosphoprotein is a transcriptional repressor and may play a role during cellular proliferation. This protein and the product of a second closely related gene, CTBP2, can dimerize. Both proteins can also interact with a polycomb group protein complex which participates in regulation of gene expression during development.

订购热线: 4008-898-798

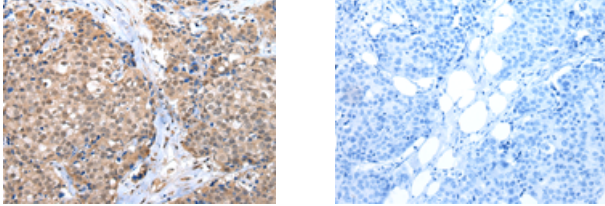
Applications

Immunohistochemistry

Predicted cell location: Nucleus

Positive control: Human breast cancer

Recommended dilution: 50-250



The image on the left is immunohistochemistry of paraffin-embedded Human breast cancer tissue using ml162698(CTBP1 Antibody) at dilution 1/65, on the right is treated with synthetic peptide. (Original magnification: $\times 200$)

Western blotting

Predicted band size: 48 kDa

Positive control: 293T and NIH/3T3 cell

Recommended dilution: 500-2000

Gel: 8%SDS-PAGE

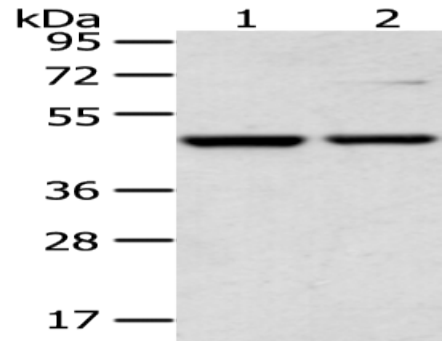
Lysate: 40 μ g

Lane 1-2: 293T and NIH/3T3 cell

Primary antibody: ml162698(CTBP1 Antibody) at dilution 1/650

Secondary antibody: Goat anti rabbit IgG at 1/8000 dilution

Exposure time: 5 seconds



ELISA

Recommended dilution: 2000-5000

联系电话: 4008-898-798, 021-61725725

联系QQ: 2881505695, 2881505696

邮箱: mlbio_cn@yeah.net

网址: www.mlbio.cn