

Anti-COX7C antibody

Cat. No.	ml162709
Package	25 µl/100 µl/200 µl
Storage	-20°C, pH7.4 PBS, 0.05% NaN ₃ , 40% Glycerol

Product overview

Description	Anti-COX7C rabbit polyclonal antibody
Applications	ELISA, WB, IHC
Immunogen	Synthetic peptide of human COX7C
Reactivity	Human, Mouse, Rat
Content	0.6 mg/ml
Host species	Rabbit
Ig class	Immunogen-specific rabbit IgG
Purification	Antigen affinity purification

Target information

Symbol	COX7C
Full name	cytochrome c oxidase subunit VIIc
Synonyms	
Swissprot	P15954

Target Background

Cytochrome c oxidase (COX), the terminal component of the mitochondrial respiratory chain, catalyzes the electron transfer from reduced cytochrome c to oxygen. This component is a heteromeric complex consisting of 3 catalytic subunits encoded by mitochondrial genes and multiple structural subunits encoded by nuclear genes. The mitochondrially-encoded subunits function in electron transfer, and the nuclear-encoded subunits may function in the regulation and assembly of the complex.

订购热线: 4008-898-798

Applications

Immunohistochemistry

Predicted cell location: Cytoplasm or Cell membrane

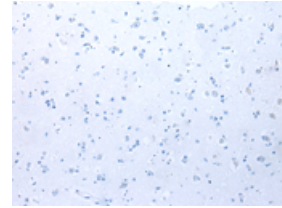
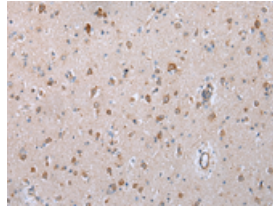
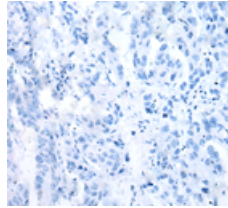
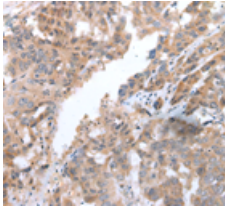
Positive control: Human breast cancer

Recommended dilution: 30-150

Predicted cell location: Cytoplasm or Cell membrane

Positive control: Human brain

Recommended dilution: 30-150



The image on the left is immunohistochemistry of paraffin-embedded Human breast cancer tissue using ml162709(COX7C Antibody) at dilution 1/40, on the right is treated with synthetic peptide. (Original magnification: ×200)

The image on the left is immunohistochemistry of paraffin-embedded Human brain tissue using ml162709(COX7C Antibody) at dilution 1/40, on the right is treated with synthetic peptide. (Original magnification: ×200)

Western blotting

Predicted band size: 7 kDa

Positive control: Mouse muscle and human fetal muscle tissue, mouse heart tissue and PC3 cell, mouse kidney and small intestines tissue, 231 cell

Recommended dilution: 500-2000

Gel: 12%SDS-PAGE

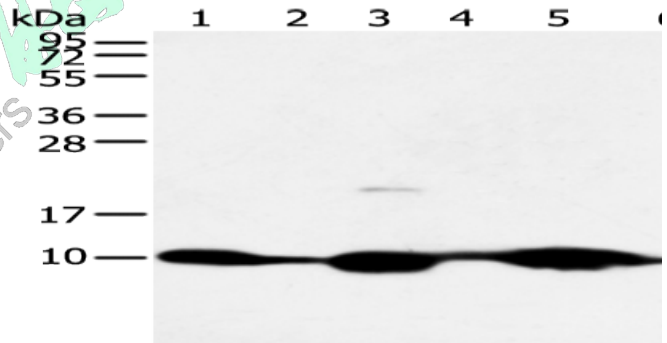
Lysate: 40 μg

Lane 1-7: Mouse muscle and human fetal muscle tissue, mouse heart tissue and PC3 cell, mouse kidney and small intestines tissue, 231 cell

Primary antibody: ml162709(COX7C Antibody) at dilution 1/300

Secondary antibody: Goat anti rabbit IgG at 1/8000 dilution

Exposure time: 5 minutes



ELISA

Recommended dilution: 2000-5000

联系电话: 4008-898-798, 021-61725725

联系QQ: 2881505695, 2881505696

邮箱: mlbio_cn@yeah.net

mlbio 酶联生物

Good elisakit producers

订购热线: 4008-898-798

网址: www.mlbio.cn