

## Anti-CLDN25 antibody

<b>Cat. No.</b>	ml162715
<b>Package</b>	25 µl/100 µl/200 µl
<b>Storage</b>	-20°C, pH7.4 PBS, 0.05% NaN <sub>3</sub> , 40% Glycerol

### Product overview

<b>Description</b>	Anti-CLDN25 rabbit polyclonal antibody
<b>Applications</b>	ELISA, WB, IHC
<b>Immunogen</b>	Synthetic peptide of human CLDN25
<b>Reactivity</b>	Human
<b>Content</b>	0.4 mg/ml
<b>Host species</b>	Rabbit
<b>Ig class</b>	Immunogen-specific rabbit IgG
<b>Purification</b>	Antigen affinity purification

### Target information

<b>Symbol</b>	CLDN25
<b>Full name</b>	claudin 25
<b>Synonyms</b>	
<b>Swissprot</b>	C9JDP6

### Target Background

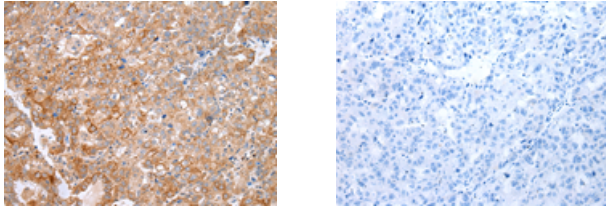
This gene encodes a member of the claudin family. Claudins are integral membrane proteins and components of tight junction strands. Tight junction strands serve as a physical barrier to prevent solutes and water from passing freely through the paracellular space between epithelial or endothelial cell sheets, and also play critical roles in maintaining cell polarity and signal transductions.

订购热线: 4008-898-798

### Applications

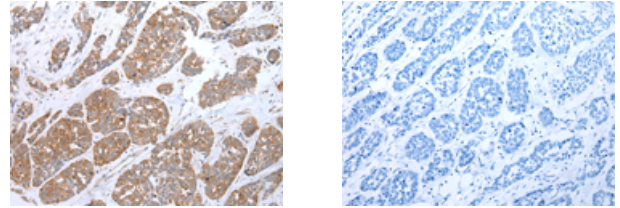
#### Immunohistochemistry

Predicted cell location: Cytoplasm  
Positive control: Human ovarian cancer  
Recommended dilution: 25-100



The image on the left is immunohistochemistry of paraffin-embedded Human ovarian cancer tissue using ml162715(CLDN25 Antibody) at dilution 1/20, on the right is treated with synthetic peptide. (Original magnification:  $\times 200$ )

Predicted cell location: Cytoplasm  
Positive control: Human esophagus cancer  
Recommended dilution: 25-100

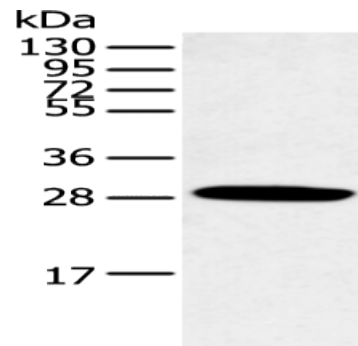


The image on the left is immunohistochemistry of paraffin-embedded Human esophagus cancer tissue using ml162715(CLDN25 Antibody) at dilution 1/20, on the right is treated with synthetic peptide. (Original magnification:  $\times 200$ )

#### Western blotting

Predicted band size: 25 kDa  
Positive control: Human normal lung tissue  
Recommended dilution: 500-2000

Gel: 12% SDS-PAGE  
Lysate: 40  $\mu$ g  
Lane: Human normal lung tissue  
Primary antibody: ml162715(CLDN25 Antibody) at dilution 1/250  
Secondary antibody: Goat anti rabbit IgG at 1/8000 dilution  
Exposure time: 10 seconds



#### ELISA

Recommended dilution: 2000-5000

联系电话: 4008-898-798, 021-61725725

联系QQ: 2881505695, 2881505696

邮箱: [mlbio\\_cn@yeah.net](mailto:mlbio_cn@yeah.net)

网址: [www.mlbio.cn](http://www.mlbio.cn)