

## Anti-DCX antibody

<b>Cat. No.</b>	ml162787
<b>Package</b>	25 µl/100 µl/200 µl
<b>Storage</b>	-20°C, pH7.4 PBS, 0.05% NaN <sub>3</sub> , 40% Glycerol

### Product overview

<b>Description</b>	Anti-DCX rabbit polyclonal antibody
<b>Applications</b>	ELISA, WB, IHC
<b>Immunogen</b>	Synthetic peptide of human DCX
<b>Reactivity</b>	Human
<b>Content</b>	0.9 mg/ml
<b>Host species</b>	Rabbit
<b>Ig class</b>	Immunogen-specific rabbit IgG
<b>Purification</b>	Antigen affinity purification

### Target information

<b>Symbol</b>	DCX
<b>Full name</b>	doublecortin
<b>Synonyms</b>	DC; DBCN; LISX; SCLH; XLIS
<b>Swissprot</b>	O43602

### Target Background

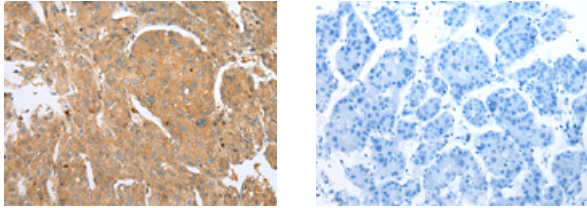
This gene encodes a member of the doublecortin family. The protein encoded by this gene is a cytoplasmic protein and contains two doublecortin domains, which bind microtubules. In the developing cortex, cortical neurons must migrate over long distances to reach the site of their final differentiation. The encoded protein appears to direct neuronal migration by regulating the organization and stability of microtubules. In addition, the encoded protein interacts with LIS1, the regulatory gamma subunit of platelet activating factor acetylhydrolase, and this interaction is important to proper microtubule function in the developing cortex.

订购热线: 4008-898-798

### Applications

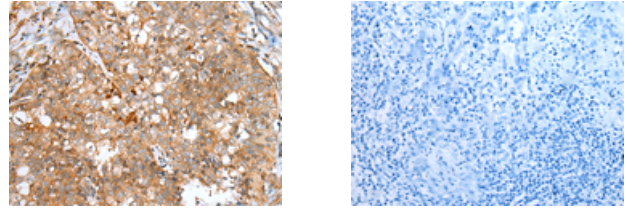
#### Immunohistochemistry

Predicted cell location: Cytoplasm  
Positive control: Human liver cancer  
Recommended dilution: 25-100



The image on the left is immunohistochemistry of paraffin-embedded Human liver cancer tissue using ml162787(DCX Antibody) at dilution 1/30, on the right is treated with synthetic peptide. (Original magnification: ×200)

Predicted cell location: Cytoplasm  
Positive control: Human esophagus cancer  
Recommended dilution: 25-100

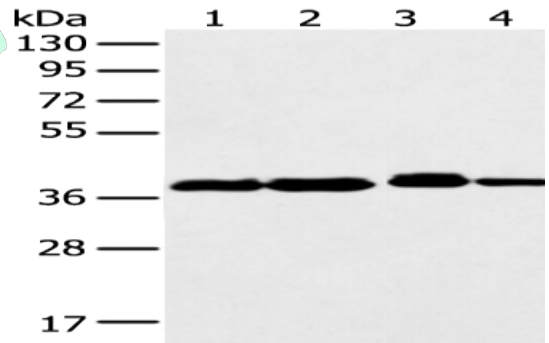


The image on the left is immunohistochemistry of paraffin-embedded Human esophagus cancer tissue using ml162787(DCX Antibody) at dilution 1/30, on the right is treated with synthetic peptide. (Original magnification: ×200)

#### Western blotting

Predicted band size: 49 kDa  
Positive control: Human fetal brain tissue and 293T, K562, Jurkat cell  
Recommended dilution: 500-2000

Gel: 8%SDS-PAGE  
Lysate: 40 µg  
Lane 1-4: Human fetal brain tissue and 293T, K562, Jurkat cell  
Primary antibody: ml162787(DCX Antibody) at dilution 1/500  
Secondary antibody: Goat anti rabbit IgG at 1/8000 dilution  
Exposure time: 10 seconds



#### ELISA

Recommended dilution: 5000-10000

联系电话: 4008-898-798, 021-61725725

联系QQ: 2881505695, 2881505696

邮箱: mlbio\_cn@yeah.net

网址: www.mlbio.cn