

## Anti-HIST1H2BJ antibody

<b>Cat. No.</b>	ml162913
<b>Package</b>	25 µl/100 µl/200 µl
<b>Storage</b>	-20°C, pH7.4 PBS, 0.05% NaN <sub>3</sub> , 40% Glycerol

### Product overview

<b>Description</b>	Anti-HIST1H2BJ rabbit polyclonal antibody
<b>Applications</b>	ELISA, WB, IHC
<b>Immunogen</b>	Synthetic peptide of human HIST1H2BJ
<b>Reactivity</b>	Human, Mouse
<b>Content</b>	0.5 mg/ml
<b>Host species</b>	Rabbit
<b>Ig class</b>	Immunogen-specific rabbit IgG
<b>Purification</b>	Antigen affinity purification

### Target information

<b>Symbol</b>	HIST1H2BJ
<b>Full name</b>	histone cluster 1, H2bj
<b>Synonyms</b>	H2BJ; H2B/r; H2BFR
<b>Swissprot</b>	P06899

### Target Background

The linker histone, H1, interacts with linker DNA between nucleosomes and functions in the compaction of chromatin into higher order structures. This gene is intronless and encodes a replication-dependent histone that is a member of the histone H2B family. Transcripts from this gene lack polyA tails but instead contain a palindromic termination element. This gene is found in the histone microcluster on chromosome 6p21.33.

订购热线: 4008-898-798

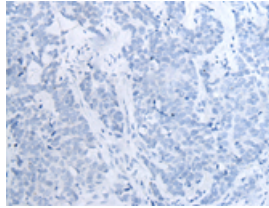
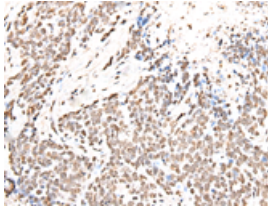
**Applications**

**Immunohistochemistry**

Predicted cell location: Nucleus

Positive control: Human thyroid cancer

Recommended dilution: 25-100

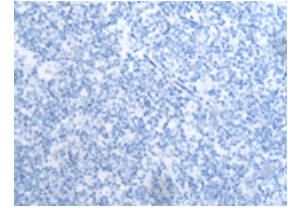
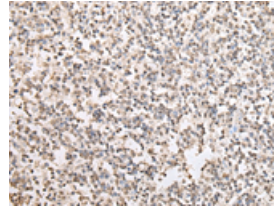


The image on the left is immunohistochemistry of paraffin-embedded Human thyroid cancer tissue using ml162913(HIST1H2BJ Antibody) at dilution 1/20, on the right is treated with synthetic peptide. (Original magnification: ×200)

Predicted cell location: Nucleus

Positive control: Human tonsil

Recommended dilution: 25-100



The image on the left is immunohistochemistry of paraffin-embedded Human tonsil tissue using ml162913(HIST1H2BJ Antibody) at dilution 1/20, on the right is treated with synthetic peptide. (Original magnification: ×200)

**Western blotting**

Predicted band size: 14 kDa

Positive control: 293T, Hepg2, Jurkat and A549 cell

Recommended dilution: 200-1000

Gel: 12%SDS-PAGE

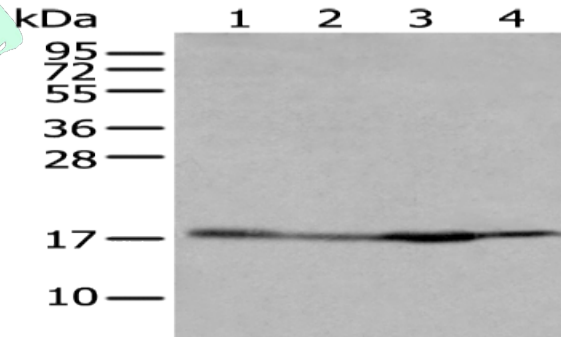
Lysate: 40 µg

Lane 1-4: 293T, Hepg2, Jurkat and A549 cell

Primary antibody: ml162913(HIST1H2BJ Antibody) at dilution 1/200

Secondary antibody: Goat anti rabbit IgG at 1/8000 dilution

Exposure time: 30 seconds



**ELISA**

Recommended dilution: 5000-10000

联系电话: 4008-898-798, 021-61725725

联系QQ: 2881505695, 2881505696

邮箱: mlbio\_cn@yeah.net

网址: www.mlbio.cn