

Anti-HSPB1 antibody

Cat. No.	ml163024
Package	25 µl/100 µl/200 µl
Storage	-20°C, pH7.4 PBS, 0.05% NaN ₃ , 40% Glycerol

Product overview

Description	Anti-HSPB1 rabbit polyclonal antibody
Applications	ELISA, WB, IHC
Immunogen	Synthetic peptide of human HSPB1
Reactivity	Human
Content	0.6 mg/ml
Host species	Rabbit
Ig class	Immunogen-specific rabbit IgG
Purification	Antigen affinity purification

Target information

Symbol	HSPB1
Full name	heat shock 27kDa protein 1
Synonyms	CMT2F; HMN2B; HSP27; HSP28; Hsp25; SRP27; HS.76067; HEL-S-102
Swissprot	P04792

Target Background

The protein encoded by this gene is induced by environmental stress and developmental changes. The encoded protein is involved in stress resistance and actin organization and translocates from the cytoplasm to the nucleus upon stress induction. Defects in this gene are a cause of Charcot-Marie-Tooth disease type 2F (CMT2F) and distal hereditary motor neuropathy (dHMN).

订购热线: 4008-898-798

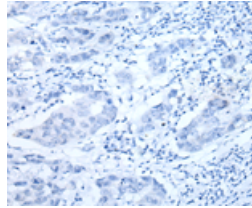
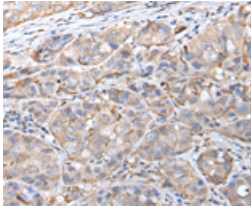
Applications

Immunohistochemistry

Predicted cell location: Cytoplasm or Nucleus

Positive control: Human breast cancer

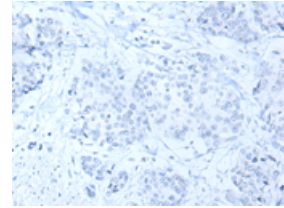
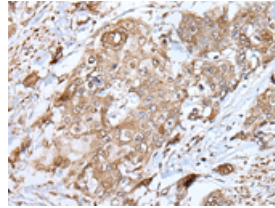
Recommended dilution: 25-100



Predicted cell location: Cytoplasm or Nucleus

Positive control: Human prostate cancer

Recommended dilution: 25-100



The image on the left is immunohistochemistry of paraffin-embedded Human breast cancer tissue using ml163024(HSPB1 Antibody) at dilution 1/25, on the right is treated with synthetic peptide. (Original magnification: ×200)

The image on the left is immunohistochemistry of paraffin-embedded Human prostate cancer tissue using ml163024(HSPB1 Antibody) at dilution 1/25, on the right is treated with synthetic peptide. (Original magnification: ×200)

Western blotting

Predicted band size: 23 kDa

Positive control: 293T, HeLa, K562, A431 and HEPG2 cell lysates

Recommended dilution: 200-1000

Gel: 12% SDS-PAGE

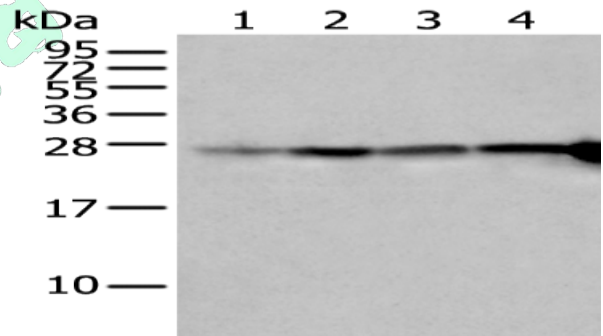
Lysate: 40 μg

Lane 1-5: 293T, HeLa, K562, A431 and HEPG2 cell lysates

Primary antibody: ml163024(HSPB1 Antibody) at dilution 1/250

Secondary antibody: Goat anti rabbit IgG at 1/8000 dilution

Exposure time: 2 seconds



ELISA

Recommended dilution: 5000-10000

联系电话: 4008-898-798, 021-61725725

联系QQ: 2881505695, 2881505696

邮箱: mlbio_cn@yeah.net

网址: www.mlbio.cn