

Anti-XAB2 antibody

Cat. No.	ml163175
Package	25 µl/100 µl/200 µl
Storage	-20°C, pH7.4 PBS, 0.05% NaN ₃ , 40% Glycerol

Product overview

Description	Anti-XAB2 rabbit polyclonal antibody
Applications	ELISA, WB, IHC
Immunogen	Synthetic peptide of human XAB2
Reactivity	Human, Mouse, Rat
Content	0.4 mg/ml
Host species	Rabbit
Ig class	Immunogen-specific rabbit IgG
Purification	Antigen affinity purification

Target information

Symbol	XAB2
Full name	XPA binding protein 2
Synonyms	HCNP; HCRN; SYF1; NTC90
Swissprot	Q9HCS7

Target Background

HCNP, also known as XAB2 (Xeroderma pigmentosum group A (XPA) binding protein 2), HCRN, SYF1 or NTC90, is a nuclear protein that participates in transcription, transcription-coupled repair (TCR) and pre-mRNA splicing. It contains fifteen tetratricopeptide repeat motifs and associates with nucleotide excision repair machinery. More specifically, HCNP associates with Cockayne syndrome group A and B proteins (CSA and CSB), RNA Polymerase II (Pol II) and XPA in response to DNA damage and is believed to function in the TCR pathway. HCNP also functions as an essential component of a pre-mRNA splicing complex of the spliceosome (composed of AQR (aquarius), PRP19, CCDC16, HCNP, ISY1 and Cyclophilin E) and is required for proper RNA synthesis in the cell. In addition, HCNP functions as a component of the RAR corepressor complex with RAR α and HDAC3 and exhibits an inhibitory effect on ATRA-induced cell differentiation. This suggests that HCNP may function as useful target in cancer therapy.

订购热线: 4008-898-798

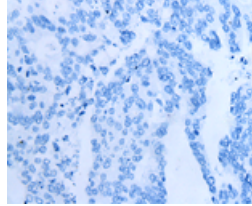
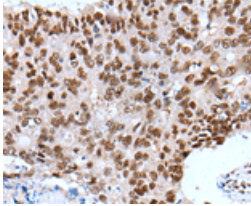
Applications

Immunohistochemistry

Predicted cell location: Nucleus

Positive control: Human colorectal cancer

Recommended dilution: 25-100

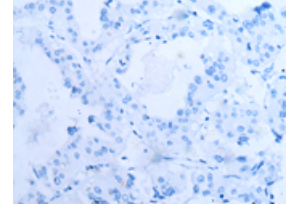
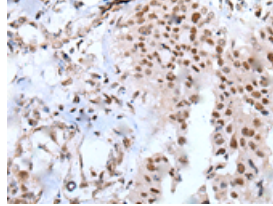


The image on the left is immunohistochemistry of paraffin-embedded Human colorectal cancer tissue using ml163175(XAB2 Antibody) at dilution 1/25, on the right is treated with synthetic peptide. (Original magnification: ×200)

Predicted cell location: Nucleus

Positive control: Human liver cancer

Recommended dilution: 25-100



The image on the left is immunohistochemistry of paraffin-embedded Human liver cancer tissue using ml163175(XAB2 Antibody) at dilution 1/25, on the right is treated with synthetic peptide. (Original magnification: ×200)

Western blotting

Predicted band size: 100 kDa

Positive control: A431, K562, HeLa, HEPG2, PC3 and 293T cell lysates

Recommended dilution: 500-2000

Gel: 6% SDS-PAGE

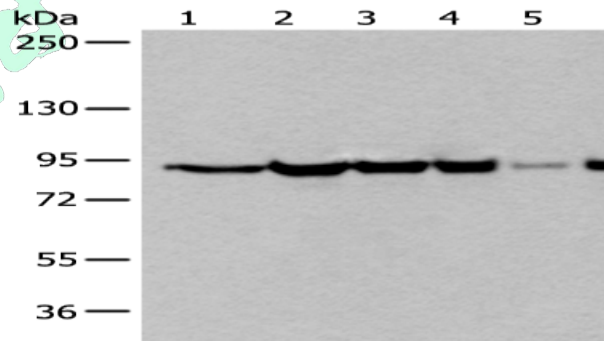
Lysate: 40 µg

Lane 1-6: A431, K562, HeLa, HEPG2, PC3 and 293T cell lysates

Primary antibody: ml163175(XAB2 Antibody) at dilution 1/250

Secondary antibody: Goat anti rabbit IgG at 1/8000 dilution

Exposure time: 1 second



ELISA

Recommended dilution: 5000-10000

联系电话: 4008-898-798, 021-61725725

联系QQ: 2881505695, 2881505696

邮箱: mlbio_cn@yeah.net

网址: www.mlbio.cn