

Anti-SUN5 antibody

Cat. No.	ml163197
Package	25 µl/100 µl/200 µl
Storage	-20°C, pH7.4 PBS, 0.05% NaN ₃ , 40% Glycerol

Product overview

Description	Anti-SUN5 rabbit polyclonal antibody
Applications	ELISA, WB, IHC
Immunogen	Synthetic peptide of human SUN5
Reactivity	Human, Mouse
Content	0.2 mg/ml
Host species	Rabbit
Ig class	Immunogen-specific rabbit IgG
Purification	Antigen affinity purification

Target information

Symbol	SUN5
Full name	Sad1 and UNC84 domain containing 5
Synonyms	SPAG4L; TSARG4; dJ726C3.1
Swissprot	Q8TC36

Target Background

TSARG4 (testis and spermatogenesis-related gene 4 protein), also known as SPAG4L (sperm-associated antigen 4-like protein) or SRG4 (spermatogenesis-related gene 4) in mice, is a ubiquitously expressed protein in humans but, in mice, it is specifically expressed in the testis. TSARG4 belongs to the spindle pole body family of proteins and contains one Unc84/SUN domain and a potential transmembrane region. The human TSARG4 protein shares 74% amino acid identity with its mouse counterpart. In mice, TSARG4 is found in round spermatids and spermatocytes and may participate in mitosis. It has been hypothesized that TSARG4 localizes to the nuclear envelope.

订购热线: 4008-898-798

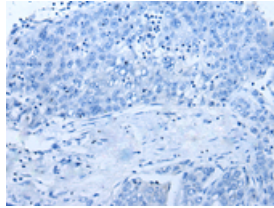
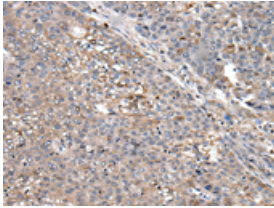
Applications

Immunohistochemistry

Predicted cell location: Cell membrane

Positive control: Human liver cancer

Recommended dilution: 25-100

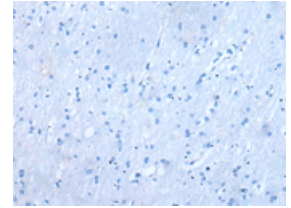
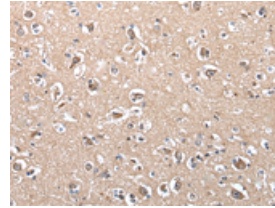


The image on the left is immunohistochemistry of paraffin-embedded Human liver cancer tissue using ml163197(SUN5 Antibody) at dilution 1/35, on the right is treated with synthetic peptide. (Original magnification: $\times 200$)

Predicted cell location: Cell membrane

Positive control: Human brain

Recommended dilution: 25-100



The image on the left is immunohistochemistry of paraffin-embedded Human brain tissue using ml163197(SUN5 Antibody) at dilution 1/35, on the right is treated with synthetic peptide. (Original magnification: $\times 200$)

Western blotting

Predicted band size: 43 kDa

Positive control: Human left kidney cancer tissue lysate

Recommended dilution: 200-1000

Gel: 8%SDS-PAGE

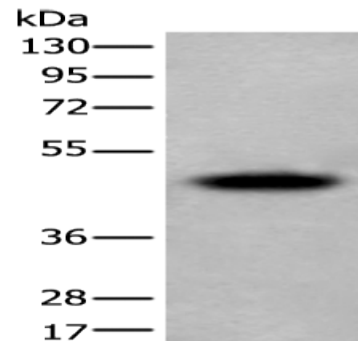
Lysate: 40 μ g

Lane: Human left kidney cancer tissue lysate

Primary antibody: ml163197(SUN5 Antibody) at dilution 1/350

Secondary antibody: Goat anti rabbit IgG at 1/8000 dilution

Exposure time: 2 minutes



ELISA

Recommended dilution: 5000-10000

联系电话: 4008-898-798, 021-61725725

联系QQ: 2881505695, 2881505696

邮箱: mlbio_cn@yeah.net

网址: www.mlbio.cn