

Anti-BORA antibody

Cat. No.	ml163288
Package	25 µl/100 µl/200 µl
Storage	-20°C, pH7.4 PBS, 0.05% NaN ₃ , 40% Glycerol

Product overview

Description	Anti-BORA rabbit polyclonal antibody
Applications	ELISA, WB, IHC
Immunogen	Synthetic peptide of human BORA
Reactivity	Human
Content	1.8 mg/ml
Host species	Rabbit
Ig class	Immunogen-specific rabbit IgG
Purification	Antigen affinity purification

Target information

Symbol	BORA
Full name	bora, aurora kinase A activator
Synonyms	C13orf34
Swissprot	Q6PGQ7

Target Background

Aurora related kinase-1 (ARK-1) is a centrosome-associated serine/threonine kinase that regulates centrosome separation, bipolar spindle assembly and chromosome segregation during mitosis. Bora (protein aurora borealis) is a 559 amino acid protein that activates ARK-1. Bora is localized to the nucleus until mitosis is initiated, when it then translocates to the cytoplasm. This translocation is dependent on activated Cdc2, which releases Bora to bind and activate ARK-1 in the cytoplasm. Plk (polo-like kinase) interacts with Bora to control the accessibility of its activation loop for phosphorylation and activation on its N-terminus by ARK-1. It is through this mechanism that Bora and ARK-1 control cellular mitotic entry. Downregulation of the gene encoding Bora results in multipolar spindles in mitosis, a phenomenon that is also observed when ARK-1 function is blocked.

订购热线: 4008-898-798

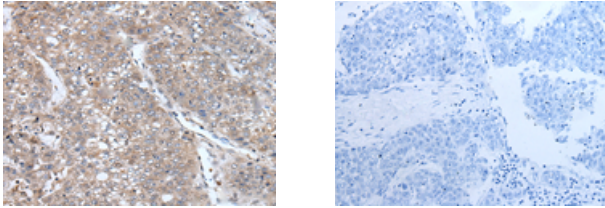
Applications

Immunohistochemistry

Predicted cell location: Cytoplasm

Positive control: Human liver cancer

Recommended dilution: 50-300



The image on the left is immunohistochemistry of paraffin-embedded Human liver cancer tissue using ml163288(BORA Antibody) at dilution 1/105, on the right is treated with synthetic peptide. (Original magnification: $\times 200$)

Western blotting

Predicted band size: 61 kDa

Positive control: K562 and Hela cell lysates

Recommended dilution: 500-2000

Gel: 8%SDS-PAGE

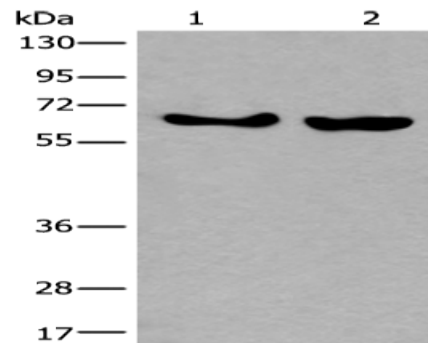
Lysate: 40 μ g

Lane 1-2: K562 and Hela cell lysates

Primary antibody: ml163288(BORA Antibody) at dilution 1/800

Secondary antibody: Goat anti rabbit IgG at 1/8000 dilution

Exposure time: 1 minute



ELISA

Recommended dilution: 5000-10000

联系电话: 4008-898-798, 021-61725725

联系QQ: 2881505695, 2881505696

邮箱: mlbio_cn@yeah.net

网址: www.mlbio.cn