

Anti-PIBF1 antibody

Cat. No.	ml163321
Package	25 µl/100 µl/200 µl
Storage	-20°C, pH7.4 PBS, 0.05% NaN ₃ , 40% Glycerol

Product overview

Description	Anti-PIBF1 rabbit polyclonal antibody
Applications	ELISA, WB, IHC
Immunogen	Synthetic peptide of human PIBF1
Reactivity	Human
Content	0.7 mg/ml
Host species	Rabbit
Ig class	Immunogen-specific rabbit IgG
Purification	Antigen affinity purification

Target information

Symbol	PIBF1
Full name	progesterone immunomodulatory binding factor 1
Synonyms	PIBF; CEP90; C13orf24
Swissprot	Q8WXW3

Target Background

PIBF (Progesterone-Induced Blocking Factor 1) is synthesized during pregnancy in response to progesterone by progesterone receptor-positive T lymphocytes (mostly gamma-delta T cells). In the presence of PIBF, natural killer (NK) cells inhibit the release of perforin from storage granules and therefore fail to lyse target cells. In humans, the amount of cells that express PIBF is significantly higher in healthy pregnant women than in women at risk for premature pregnancy termination. Full-length PIBF is associated with the nucleus, whereas secretion of shorter forms is induced by activation of the cell. Research suggests that PIBF functions as a transcription factor in its full-length form, while smaller forms may act as cytokines. The PIBF gene encodes a deduced hydrophilic 757-amino acid alpha-helical protein with an N-terminal signal sequence, a leucine zipper motif, a basic zipper sequence, a PEST sequence, a nuclear localization signal, an endoplasmic reticulum membrane retention signal, and many presumed N-glycosylation and phosphorylation sites.

订购热线: 4008-898-798

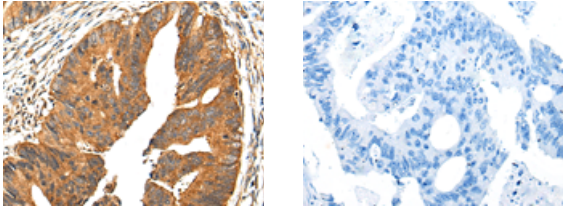
Applications

Immunohistochemistry

Predicted cell location: Cytoplasm

Positive control: Human colorectal cancer

Recommended dilution: 30-150



The image on the left is immunohistochemistry of paraffin-embedded Human colorectal cancer tissue using ml163321(PIBF1 Antibody) at dilution 1/30, on the right is treated with synthetic peptide. (Original magnification: $\times 200$)

Western blotting

Predicted band size: 90 kDa

Positive control: 293T, HeLa, K562 and 231 cell lysates

Recommended dilution: 500-2000

Gel: 6%SDS-PAGE

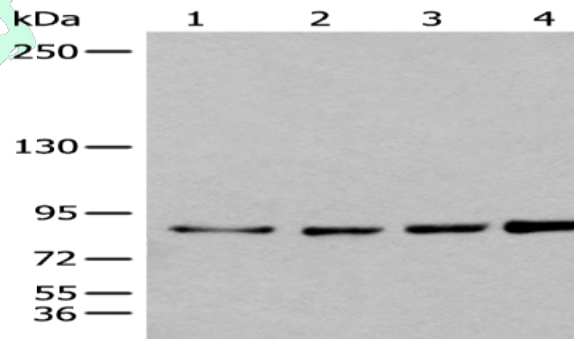
Lysate: 40 μ g

Lane 1-4: 293T, HeLa, K562 and 231 cell lysates

Primary antibody: ml163321(PIBF1 Antibody) at dilution 1/400

Secondary antibody: Goat anti rabbit IgG at 1/8000 dilution

Exposure time: 1 minute



ELISA

Recommended dilution: 5000-10000

联系电话: 4008-898-798, 021-61725725

联系QQ: 2881505695, 2881505696

邮箱: mlbio_cn@yeah.net

网址: www.mlbio.cn