

Anti-CNTNAP1 antibody

Cat. No.	ml163379
Package	25 µl/100 µl/200 µl
Storage	-20°C, pH7.4 PBS, 0.05% NaN ₃ , 40% Glycerol

Product overview

Description	Anti-CNTNAP1 rabbit polyclonal antibody
Applications	ELISA, WB, IHC
Immunogen	Synthetic peptide of human CNTNAP1
Reactivity	Human, Mouse, Rat
Content	0.3 mg/ml
Host species	Rabbit
Ig class	Immunogen-specific rabbit IgG
Purification	Antigen affinity purification

Target information

Symbol	CNTNAP1
Full name	contactin associated protein 1
Synonyms	P190; CASPR; NRXN4; CNTNAP
Swissprot	P78357

Target Background

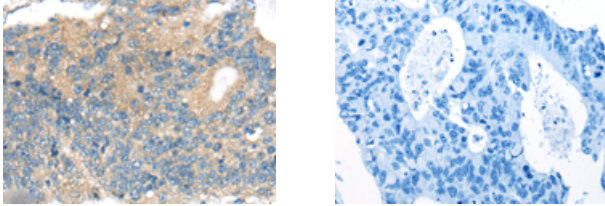
The gene product was initially identified as a 190-kD protein associated with the contactin-PTPRZ1 complex. The 1,384-amino acid protein, also designated p190 or CASPR for 'contactin-associated protein,' includes an extracellular domain with several putative protein-protein interaction domains, a putative transmembrane domain, and a 74-amino acid cytoplasmic domain. Northern blot analysis showed that the gene is transcribed predominantly in brain as a transcript of 6.2 kb, with weak expression in several other tissues tested. The architecture of its extracellular domain is similar to that of neurexins, and this protein may be the signaling subunit of contactin, enabling recruitment and activation of intracellular signaling pathways in neurons.

订购热线: 4008-898-798

Applications

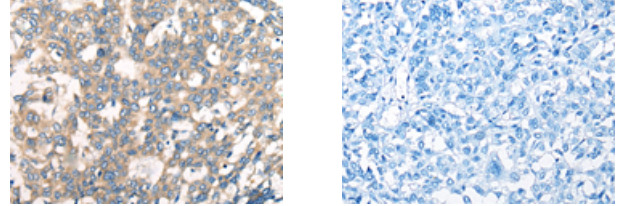
Immunohistochemistry

Predicted cell location: Cytoplasm
Positive control: Human colorectal cancer
Recommended dilution: 20-100



The image on the left is immunohistochemistry of paraffin-embedded Human colorectal cancer tissue using ml163379(CNTNAP1 Antibody) at dilution 1/25, on the right is treated with synthetic peptide. (Original magnification: ×200)

Predicted cell location: Cytoplasm
Positive control: Human liver cancer
Recommended dilution: 20-100

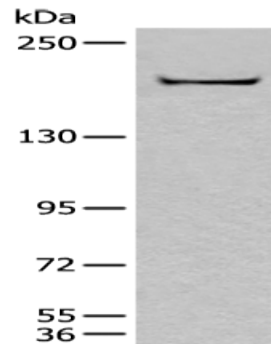


The image on the left is immunohistochemistry of paraffin-embedded Human liver cancer tissue using ml163379(CNTNAP1 Antibody) at dilution 1/25, on the right is treated with synthetic peptide. (Original magnification: ×200)

Western blotting

Predicted band size: 156 kDa
Positive control: A172 cell lysate
Recommended dilution: 200-1000

Gel: 6%SDS-PAGE
Lysate: 40 µg
Lane: A172 cell lysate
Primary antibody: ml163379(CNTNAP1 Antibody) at dilution 1/250
Secondary antibody: Goat anti rabbit IgG at 1/8000 dilution
Exposure time: 10 seconds



ELISA

Recommended dilution: 5000-10000

联系电话: 4008-898-798, 021-61725725

联系QQ: 2881505695, 2881505696

邮箱: mlbio_cn@yeah.net

网址: www.mlbio.cn