

Anti-CDKL1 antibody

Cat. No.	ml163416
Package	25 µl/100 µl/200 µl
Storage	-20°C, pH7.4 PBS, 0.05% NaN ₃ , 40% Glycerol

Product overview

Description	Anti-CDKL1 rabbit polyclonal antibody
Applications	ELISA, WB, IHC
Immunogen	Synthetic peptide of human CDKL1
Reactivity	Human
Content	0.3 mg/ml
Host species	Rabbit
Ig class	Immunogen-specific rabbit IgG
Purification	Antigen affinity purification

Target information

Symbol	CDKL1
Full name	cyclin dependent kinase like 1
Synonyms	P42; KKIALRE
Swissprot	Q00532

Target Background

The activation of signal transduction pathways by growth factors, hormones and neurotransmitters is mediated by the MAP kinases ERK 1 and ERK 2. ERK proteins are regulated by dual phosphorylation at specific tyrosine and threonine sites mapping within a characteristic Thr-Glu-Tyr motif. The protein kinase p56 KKIAMRE is distantly related to the MAP kinase group of proteins and is closely related to p42 KKIALRE. KKIAMRE is predominantly expressed in testis, kidney, brain and lung. KKIAMRE contains the conserved MAP kinase dual phosphorylation motif in the sequence Thr-Asp-Tyr and is activated by treatment of cells by EGF. However, unlike other MAP kinases, the EGF-stimulated kinase activity does not require phosphorylation of KKIAMRE and KKIALRE in the Thr-Asp-Tyr motif.

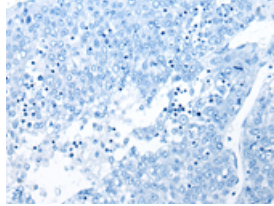
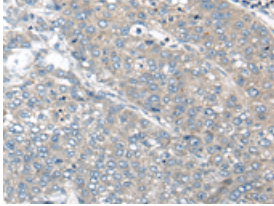
Applications

Immunohistochemistry

Predicted cell location: Cytoplasm or Nucleus

Positive control: Human liver cancer

Recommended dilution: 20-100

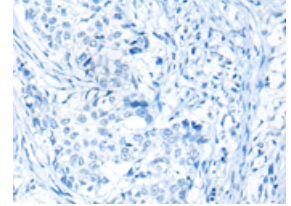
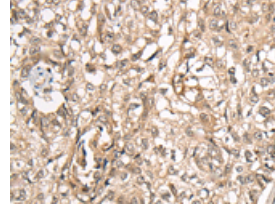


The image on the left is immunohistochemistry of paraffin-embedded Human liver cancer tissue using ml163416(CDKL1 Antibody) at dilution 1/20, on the right is treated with synthetic peptide. (Original magnification: $\times 200$)

Predicted cell location: Cytoplasm or Nucleus

Positive control: Human lung cancer

Recommended dilution: 20-100



The image on the left is immunohistochemistry of paraffin-embedded Human lung cancer tissue using ml163416(CDKL1 Antibody) at dilution 1/20, on the right is treated with synthetic peptide. (Original magnification: $\times 200$)

Western blotting

Predicted band size: 42 kDa

Positive control: Human prostate tissue and Human stomach tissue lysates

Recommended dilution: 200-1000

Gel: 8%SDS-PAGE

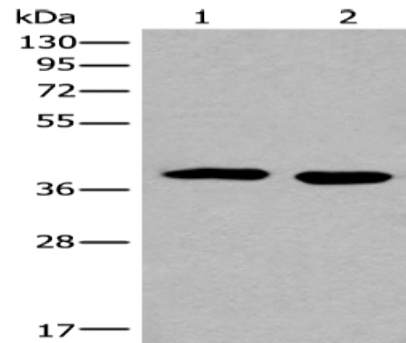
Lysate: 40 μ g

Lane 1-2: Human prostate tissue and Human stomach tissue lysates

Primary antibody: ml163416(CDKL1 Antibody) at dilution 1/200

Secondary antibody: Goat anti rabbit IgG at 1/8000 dilution

Exposure time: 1 minute



ELISA

Recommended dilution: 5000-10000

联系电话: 4008-898-798, 021-61725725

联系QQ: 2881505695, 2881505696

邮箱: mlbio_cn@yeah.net

网址: www.mlbio.cn