

## Anti-PMP22 antibody

<b>Cat. No.</b>	ml163518
<b>Package</b>	25 µl/100 µl/200 µl
<b>Storage</b>	-20°C, pH7.4 PBS, 0.05% NaN <sub>3</sub> , 40% Glycerol

### Product overview

<b>Description</b>	Anti-PMP22 rabbit polyclonal antibody
<b>Applications</b>	ELISA, WB, IHC
<b>Immunogen</b>	Synthetic peptide of human PMP22
<b>Reactivity</b>	Human, Mouse
<b>Content</b>	0.1 mg/ml
<b>Host species</b>	Rabbit
<b>Ig class</b>	Immunogen-specific rabbit IgG
<b>Purification</b>	Antigen affinity purification

### Target information

<b>Symbol</b>	PMP22
<b>Full name</b>	peripheral myelin protein 22
<b>Synonyms</b>	DSS; GAS3; HNPP; CMT1A; CMT1E; GAS-3; Sp110; HMSNIA
<b>Swissprot</b>	Q01453

### Target Background

This gene encodes an integral membrane protein that is a major component of myelin in the peripheral nervous system. Studies suggest two alternately used promoters drive tissue-specific expression. Various mutations of this gene are causes of Charcot-Marie-Tooth disease Type IA, Dejerine-Sottas syndrome, and hereditary neuropathy with liability to pressure palsies. Alternative splicing results in multiple transcript variants.

订购热线: 4008-898-798

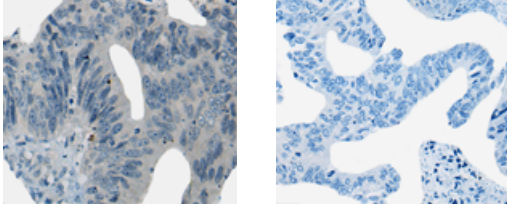
### Applications

#### Immunohistochemistry

Predicted cell location: Cell membrane

Positive control: Human colorectal cancer

Recommended dilution: 20-100



The image on the left is immunohistochemistry of paraffin-embedded Human colorectal cancer tissue using ml163518(PMP22 Antibody) at dilution 1/20, on the right is treated with synthetic peptide. (Original magnification:  $\times 200$ )

#### Western blotting

Predicted band size: 18 kDa

Positive control: Human cerebrum tissue, A172 cell, Mouse lung tissue, 293T cell, 231 cell, Mouse liver tissue, Mouse brain tissue lysates

Recommended dilution: 200-1000

Gel: 12% SDS-PAGE

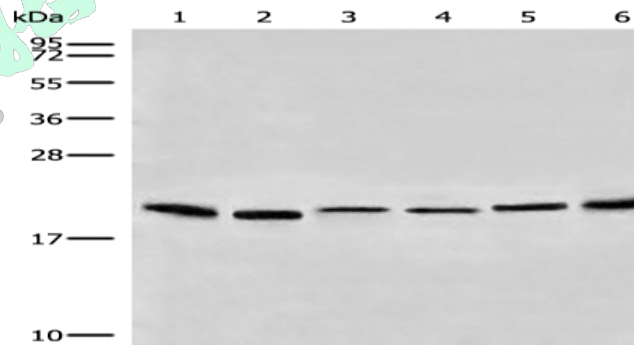
Lysate: 40  $\mu$ g

Lane 1-7: Human cerebrum tissue, A172 cell, Mouse lung tissue, 293T cell, 231 cell, Mouse liver tissue, Mouse brain tissue lysates

Primary antibody: ml163518(PMP22 Antibody) at dilution 1/200

Secondary antibody: Goat anti rabbit IgG at 1/8000 dilution

Exposure time: 10 seconds



#### ELISA

Recommended dilution: 5000-10000

联系电话: 4008-898-798, 021-61725725

联系QQ: 2881505695, 2881505696

邮箱: mlbio\_cn@yeah.net

**mlbio** 酶联生物

Good elisakit producers

订购热线: 4008-898-798

网址: [www.mlbio.cn](http://www.mlbio.cn)