

Anti-EPHA6 antibody

Cat. No.	ml163533
Package	25 µl/100 µl/200 µl
Storage	-20°C, pH7.4 PBS, 0.05% NaN ₃ , 40% Glycerol

Product overview

Description	Anti-EPHA6 rabbit polyclonal antibody
Applications	ELISA, WB, IHC
Immunogen	Synthetic peptide of human EPHA6
Reactivity	Human, Mouse, Rat
Content	0.8 mg/ml
Host species	Rabbit
Ig class	Immunogen-specific rabbit IgG
Purification	Antigen affinity purification

Target information

Symbol	EPHA6
Full name	EPH receptor A6
Synonyms	EHK2; EK12; EPA6; EHK-2; HEK12; PRO57066
Swissprot	Q9UF33

Target Background

Receptor tyrosine kinase which binds promiscuously GPI-anchored ephrin-A family ligands residing on adjacent cells, leading to contact-dependent bidirectional signaling into neighboring cells. The signaling pathway downstream of the receptor is referred to as forward signaling while the signaling pathway downstream of the ephrin ligand is referred to as reverse signaling.

订购热线: 4008-898-798

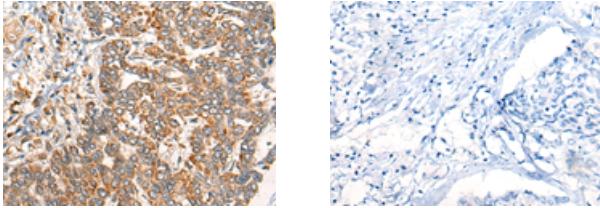
Applications

Immunohistochemistry

Predicted cell location: Cytoplasm and Cell membrane

Positive control: Human liver cancer

Recommended dilution: 30-150

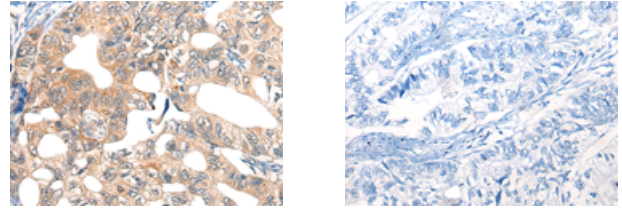


The image on the left is immunohistochemistry of paraffin-embedded Human liver cancer tissue using ml163533(EPHA6 Antibody) at dilution 1/40, on the right is treated with synthetic peptide. (Original magnification: ×200)

Predicted cell location: Cytoplasm and Cell membrane

Positive control: Human gastric cancer

Recommended dilution: 30-150



The image on the left is immunohistochemistry of paraffin-embedded Human gastric cancer tissue using ml163533(EPHA6 Antibody) at dilution 1/40, on the right is treated with synthetic peptide. (Original magnification: ×200)

Western blotting

Predicted band size: 116 kDa

Positive control: 293T cell, Human testis tissue lysate, A549 cell lysates

Recommended dilution: 500-2000

Gel: 6%SDS-PAGE

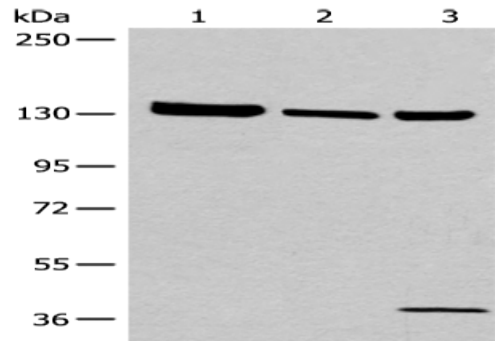
Lysate: 40 µg

Lane 1-3: 293T cell, Human testis tissue lysate, A549 cell lysates

Primary antibody: ml163533(EPHA6 Antibody) at dilution 1/800

Secondary antibody: Goat anti rabbit IgG at 1/8000 dilution

Exposure time: 10 seconds



ELISA

Recommended dilution: 5000-10000

联系电话: 4008-898-798, 021-61725725

联系QQ: 2881505695, 2881505696

邮箱: mlbio_cn@yeah.net

网址: www.mlbio.cn