

## Anti-MAP1LC3B antibody

<b>Cat. No.</b>	ml163557
<b>Package</b>	25 µl/100 µl/200 µl
<b>Storage</b>	-20°C, pH7.4 PBS, 0.05% NaN <sub>3</sub> , 40% Glycerol

### Product overview

<b>Description</b>	Anti-MAP1LC3B rabbit polyclonal antibody
<b>Applications</b>	ELISA, WB, IHC
<b>Immunogen</b>	Synthetic peptide of human MAP1LC3B
<b>Reactivity</b>	Human, Mouse, Rat
<b>Content</b>	0.5 mg/ml
<b>Host species</b>	Rabbit
<b>Ig class</b>	Immunogen-specific rabbit IgG
<b>Purification</b>	Antigen affinity purification

### Target information

<b>Symbol</b>	MAP1LC3B
<b>Full name</b>	microtubule associated protein 1 light chain 3 beta
<b>Synonyms</b>	LC3B; ATG8F; MAP1LC3B-a; MAP1A/1BLC3
<b>Swissprot</b>	Q9GZQ8

### Target Background

The product of this gene is a subunit of neuronal microtubule-associated MAP1A and MAP1B proteins, which are involved in microtubule assembly and important for neurogenesis. Studies on the rat homolog implicate a role for this gene in autophagy, a process that involves the bulk degradation of cytoplasmic component.

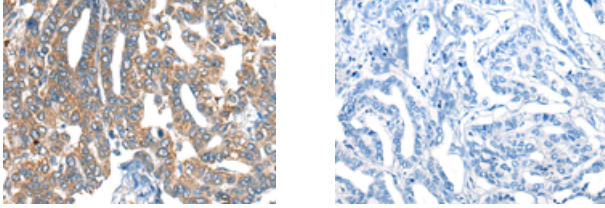
## Applications

### Immunohistochemistry

Predicted cell location: Cytoplasm or Nucleus

Positive control: Human liver cancer

Recommended dilution: 20-100

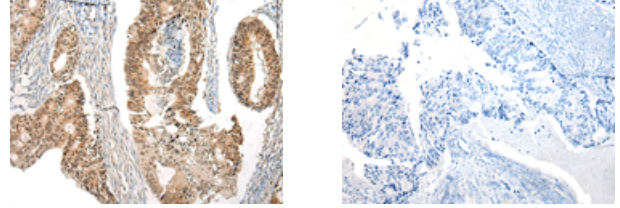


The image on the left is immunohistochemistry of paraffin-embedded Human liver cancer tissue using ml163557(MAP1LC3B Antibody) at dilution 1/20, on the right is treated with synthetic peptide. (Original magnification:  $\times 200$ )

Predicted cell location: Cytoplasm or Nucleus

Positive control: Human colorectal cancer

Recommended dilution: 20-100



The image on the left is immunohistochemistry of paraffin-embedded Human colorectal cancer tissue using ml163557(MAP1LC3B Antibody) at dilution 1/20, on the right is treated with synthetic peptide. (Original magnification:  $\times 200$ )

### Western blotting

Predicted band size: 15 kDa

Positive control: Human fetal brain tissue and HEPG2 cell lysates

Recommended dilution: 200-1000

Gel: 12% SDS-PAGE

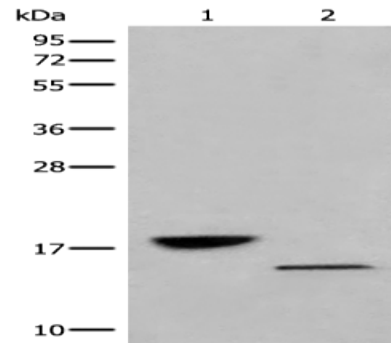
Lysate: 40  $\mu$ g

Lane 1-2: Human fetal brain tissue and HEPG2 cell lysates

Primary antibody: ml163557(MAP1LC3B Antibody) at dilution 1/200

Secondary antibody: Goat anti rabbit IgG at 1/8000 dilution

Exposure time: 5 seconds



### ELISA

Recommended dilution: 5000-10000

联系电话: 4008-898-798, 021-61725725

联系QQ: 2881505695, 2881505696

邮箱: mlbio\_cn@yeah.net

网址: www.mlbio.cn