

## Anti-DAPP1 antibody

<b>Cat. No.</b>	ml163670
<b>Package</b>	25 $\mu$ l/100 $\mu$ l/200 $\mu$ l
<b>Storage</b>	-20°C, pH7.4 PBS, 0.05% NaN <sub>3</sub> , 40% Glycerol

### Product overview

<b>Description</b>	Anti-DAPP1 rabbit polyclonal antibody
<b>Applications</b>	ELISA, WB, IHC
<b>Immunogen</b>	Synthetic peptide of human DAPP1
<b>Reactivity</b>	Human, Mouse
<b>Content</b>	0.4 mg/ml
<b>Host species</b>	Rabbit
<b>Ig class</b>	Immunogen-specific rabbit IgG
<b>Purification</b>	Antigen affinity purification

### Target information

<b>Symbol</b>	DAPP1
<b>Full name</b>	dual adaptor of phosphotyrosine and 3-phosphoinositides 1
<b>Synonyms</b>	BAM32
<b>Swissprot</b>	Q9UN19

### Target Background

May act as a B-cell-associated adapter that regulates B-cell antigen receptor (BCR)-signaling downstream of PI3K.

订购热线: 4008-898-798

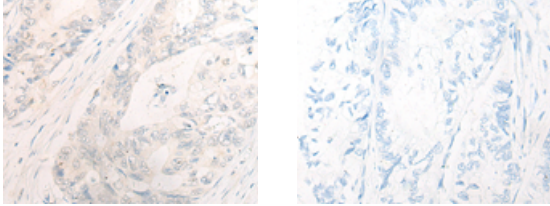
### Applications

#### Immunohistochemistry

Predicted cell location: Cytoplasm

Positive control: Human gastric cancer

Recommended dilution: 10-50



The image on the left is immunohistochemistry of paraffin-embedded Human gastric cancer tissue using ml163670(DAPP1 Antibody) at dilution 1/20, on the right is treated with synthetic peptide. (Original magnification: ×200)

#### Western blotting

Predicted band size: 33 kDa

Positive control: Human kidney tissue, Mouse heart tissue, Human left kidney and Human heart tissue lysates

Recommended dilution: 200-1000

Gel: 8%SDS-PAGE

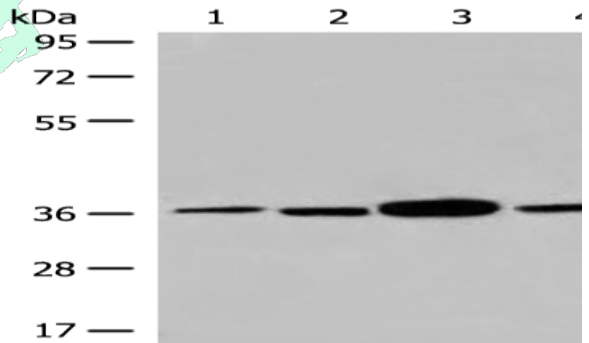
Lysate: 40 µg

Lane 1-4: Human kidney tissue, Mouse heart tissue, Human left kidney and Human heart tissue lysates

Primary antibody: ml163670(DAPP1 Antibody) at dilution 1/200

Secondary antibody: Goat anti rabbit IgG at 1/8000 dilution

Exposure time: 1 minute



#### ELISA

Recommended dilution: 5000-10000

联系电话: 4008-898-798, 021-61725725

联系QQ: 2881505695, 2881505696

邮箱: mlbio\_cn@yeah.net

网址: www.mlbio.cn