

Anti-DIP2B antibody

Cat. No.	ml163713
Package	25 µl/100 µl/200 µl
Storage	-20°C, pH7.4 PBS, 0.05% NaN ₃ , 40% Glycerol

Product overview

Description	Anti-DIP2B rabbit polyclonal antibody
Applications	ELISA, WB, IHC
Immunogen	Synthetic peptide of human DIP2B
Reactivity	Human, Mouse
Content	0.48 mg/ml
Host species	Rabbit
Ig class	Immunogen-specific rabbit IgG
Purification	Antigen affinity purification

Target information

Symbol	DIP2B
Full name	disco interacting protein 2 homolog B
Synonyms	
Swissprot	Q9P265

Target Background

This gene encodes a member of the disco-interacting protein homolog 2 protein family. The encoded protein contains a binding site for the transcriptional regulator DNA methyltransferase 1 associated protein 1 as well as AMP-binding sites. The presence of these sites suggests that the encoded protein may participate in DNA methylation. This gene is located near a folate-sensitive fragile site, and CGG-repeat expansion in the promoter of this gene which affects transcription has been detected in individuals containing this fragile site on chromosome 12.

订购热线: 4008-898-798

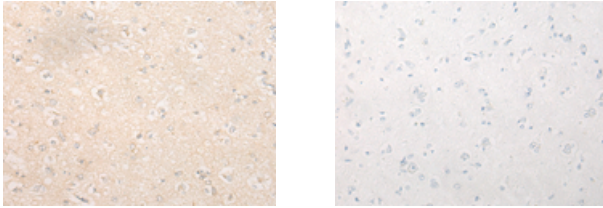
Applications

Immunohistochemistry

Predicted cell location: Cytoplasm

Positive control: Human brain

Recommended dilution: 20-100



The image on the left is immunohistochemistry of paraffin-embedded Human brain tissue using ml163713(DIP2B Antibody) at dilution 1/20, on the right is treated with synthetic peptide. (Original magnification: $\times 200$)

Western blotting

Predicted band size: 172 kDa

Positive control: NIH/3T3 cell lysate

Recommended dilution: 200-1000

Gel: 6%SDS-PAGE

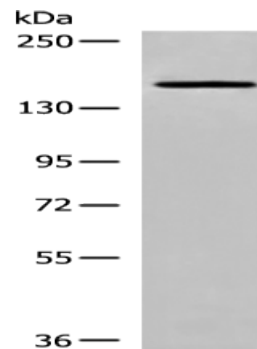
Lysate: 40 μ g

Lane: NIH/3T3 cell lysate

Primary antibody: ml163713(DIP2B Antibody) at dilution 1/200

Secondary antibody: Goat anti rabbit IgG at 1/8000 dilution

Exposure time: 5 minutes



ELISA

Recommended dilution: 5000-10000

联系电话: 4008-898-798, 021-61725725

联系QQ: 2881505695, 2881505696

邮箱: mlbio_cn@yeah.net

网址: www.mlbio.cn