

## Anti-DNAJC9 antibody

<b>Cat. No.</b>	ml163729
<b>Package</b>	25 µl/100 µl/200 µl
<b>Storage</b>	-20°C, pH7.4 PBS, 0.05% NaN <sub>3</sub> , 40% Glycerol

### Product overview

<b>Description</b>	Anti-DNAJC9 rabbit polyclonal antibody
<b>Applications</b>	ELISA, WB, IHC
<b>Immunogen</b>	Synthetic peptide of human DNAJC9
<b>Reactivity</b>	Human
<b>Content</b>	0.36 mg/ml
<b>Host species</b>	Rabbit
<b>Ig class</b>	Immunogen-specific rabbit IgG
<b>Purification</b>	Antigen affinity purification

### Target information

<b>Symbol</b>	DNAJC9
<b>Full name</b>	DnaJ heat shock protein family (Hsp40) member C9
<b>Synonyms</b>	JDD1; SB73; HDJC9
<b>Swissprot</b>	Q8WXX5

### Target Background

May play a role as co-chaperone of the Hsp70 family proteins HSPA1A, HSPA1B and HSPA8.

订购热线: 4008-898-798

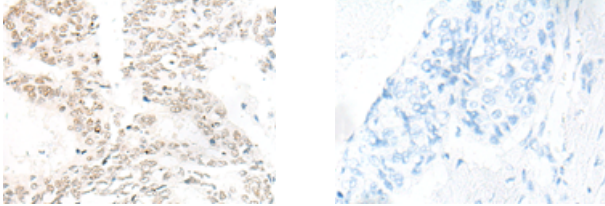
### Applications

#### Immunohistochemistry

Predicted cell location: Nucleus or Cytoplasm

Positive control: Human colorectal cancer

Recommended dilution: 20-100

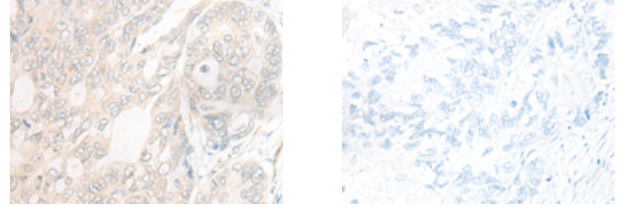


The image on the left is immunohistochemistry of paraffin-embedded Human colorectal cancer tissue using ml163729(DNAJC9 Antibody) at dilution 1/20, on the right is treated with synthetic peptide. (Original magnification:  $\times 200$ )

Predicted cell location: Nucleus or Cytoplasm

Positive control: Human gastric cancer

Recommended dilution: 20-100



The image on the left is immunohistochemistry of paraffin-embedded Human gastric cancer tissue using ml163729(DNAJC9 Antibody) at dilution 1/20, on the right is treated with synthetic peptide. (Original magnification:  $\times 200$ )

#### Western blotting

Predicted band size: 30 kDa

Positive control: Human tonsil tissue lysate

Recommended dilution: 200-1000

Gel: 12% SDS-PAGE

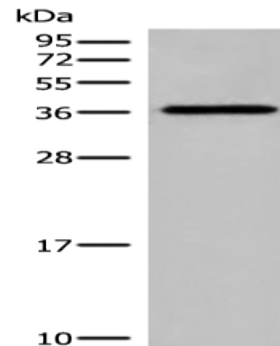
Lysate: 40  $\mu$ g

Lane: Human tonsil tissue lysate

Primary antibody: ml163729(DNAJC9 Antibody) at dilution 1/200

Secondary antibody: Goat anti rabbit IgG at 1/8000 dilution

Exposure time: 1 minute



#### ELISA

Recommended dilution: 5000-10000

联系电话: 4008-898-798, 021-61725725

联系QQ: 2881505695, 2881505696

邮箱: [mlbio\\_cn@yeah.net](mailto:mlbio_cn@yeah.net)

网址: [www.mlbio.cn](http://www.mlbio.cn)