

## Anti-EIF3J antibody

<b>Cat. No.</b>	ml163770
<b>Package</b>	25 µl/100 µl/200 µl
<b>Storage</b>	-20°C, pH7.4 PBS, 0.05% NaN <sub>3</sub> , 40% Glycerol

### Product overview

<b>Description</b>	Anti-EIF3J rabbit polyclonal antibody
<b>Applications</b>	ELISA, WB, IHC
<b>Immunogen</b>	Synthetic peptide of human EIF3J
<b>Reactivity</b>	Human, Rat
<b>Content</b>	0.48 mg/ml
<b>Host species</b>	Rabbit
<b>Ig class</b>	Immunogen-specific rabbit IgG
<b>Purification</b>	Antigen affinity purification

### Target information

<b>Symbol</b>	EIF3J
<b>Full name</b>	eukaryotic translation initiation factor 3 subunit J
<b>Synonyms</b>	EIF3S1; eIF3-p35; eIF3-alpha
<b>Swissprot</b>	O75822

### Target Background

This gene encodes a core subunit of the eukaryotic initiation factor 3 complex, which participates in the initiation of translation by aiding in the recruitment of protein and mRNA components to the 40S ribosome. There are pseudogenes for this gene on chromosomes 1, 3, and 9. Alternative splicing results in multiple transcript variants encoding different isoforms.

订购热线: 4008-898-798

### Applications

#### Immunohistochemistry

Predicted cell location: Cytoplasm

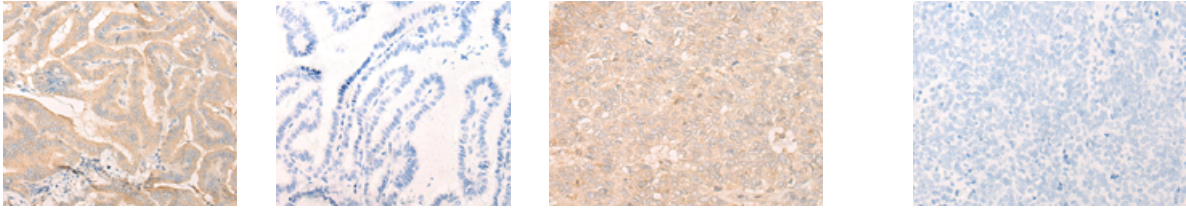
Positive control: Human thyroid cancer

Recommended dilution: 30-150

Predicted cell location: Cytoplasm

Positive control: Human ovarian cancer

Recommended dilution: 30-150



The image on the left is immunohistochemistry of paraffin-embedded Human thyroid cancer tissue using m163770(EIF3J Antibody) at dilution 1/20, on the right is treated with synthetic peptide. (Original magnification:  $\times 200$ )

The image on the left is immunohistochemistry of paraffin-embedded Human ovarian cancer tissue using m163770(EIF3J Antibody) at dilution 1/20, on the right is treated with synthetic peptide. (Original magnification:  $\times 200$ )

#### Western blotting

Predicted band size: 29 kDa

Positive control: HeLa, K562, 293T, Jurkat, 231 and SKOV3 cell lysates

Recommended dilution: 200-1000

Gel: 12% SDS-PAGE

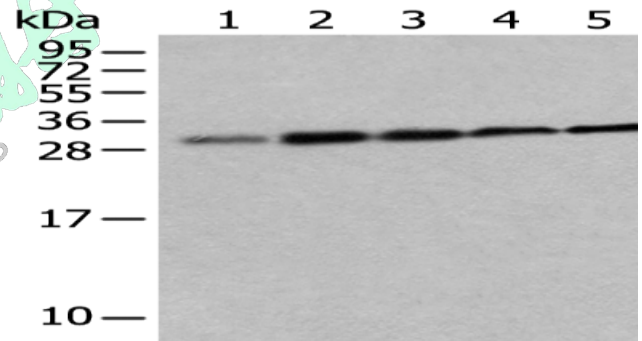
Lysate: 40  $\mu$ g

Lane 1-6: HeLa, K562, 293T, Jurkat, 231 and SKOV3 cell lysates

Primary antibody: m163770(EIF3J Antibody) at dilution 1/200

Secondary antibody: Goat anti rabbit IgG at 1/8000 dilution

Exposure time: 2 minutes



#### ELISA

Recommended dilution: 5000-10000

联系电话: 4008-898-798, 021-61725725

联系QQ: 2881505695, 2881505696

邮箱: [mlbio\\_cn@yeah.net](mailto:mlbio_cn@yeah.net)

网址: [www.mlbio.cn](http://www.mlbio.cn)