

## Anti-FAM155B antibody

<b>Cat. No.</b>	ml163874
<b>Package</b>	25 µl/100 µl/200 µl
<b>Storage</b>	-20°C, pH7.4 PBS, 0.05% NaN <sub>3</sub> , 40% Glycerol

### Product overview

<b>Description</b>	Anti-FAM155B rabbit polyclonal antibody
<b>Applications</b>	ELISA, WB, IHC
<b>Immunogen</b>	Synthetic peptide of human FAM155B
<b>Reactivity</b>	Human
<b>Content</b>	1.02 mg/ml
<b>Host species</b>	Rabbit
<b>Ig class</b>	Immunogen-specific rabbit IgG
<b>Purification</b>	Antigen affinity purification

### Target information

<b>Symbol</b>	FAM155B
<b>Full name</b>	family with sequence similarity 155 member B
<b>Synonyms</b>	TED; TMEM28; CXorf63; bB57D9.1
<b>Swissprot</b>	O75949

### Target Background

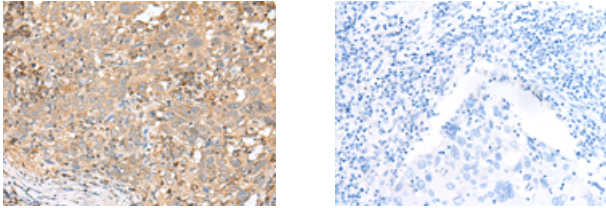
This gene encodes a product belonging to a family of proteins with unknown function. The presence of two transmembrane domains suggests that this protein is a multi-pass membrane protein.

订购热线: 4008-898-798

### Applications

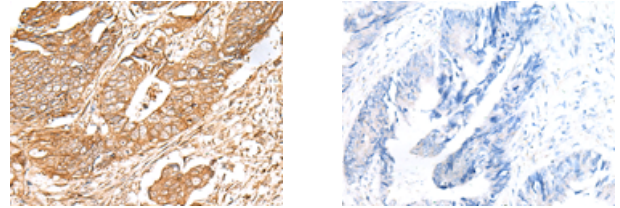
#### Immunohistochemistry

Predicted cell location: Cell membrane  
Positive control: Human cervical cancer  
Recommended dilution: 40-200



The image on the left is immunohistochemistry of paraffin-embedded Human cervical cancer tissue using ml163874(FAM155B Antibody) at dilution 1/35, on the right is treated with synthetic peptide. (Original magnification:  $\times 200$ )

Predicted cell location: Cell membrane  
Positive control: Human colorectal cancer  
Recommended dilution: 40-200

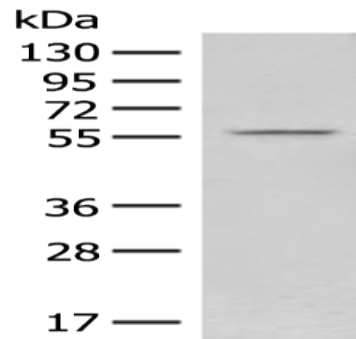


The image on the left is immunohistochemistry of paraffin-embedded Human colorectal cancer tissue using ml163874(FAM155B Antibody) at dilution 1/35, on the right is treated with synthetic peptide. (Original magnification:  $\times 200$ )

#### Western blotting

Predicted band size: 53 kDa  
Positive control: Human heart tissue lysate  
Recommended dilution: 200-1000

Gel: 8%SDS-PAGE  
Lysate: 40  $\mu$ g  
Lane: Human heart tissue lysate  
Primary antibody: ml163874(FAM155B Antibody) at dilution 1/250  
Secondary antibody: Goat anti rabbit IgG at 1/8000 dilution  
Exposure time: 1 minute



#### ELISA

Recommended dilution: 5000-10000

联系电话: 4008-898-798, 021-61725725

联系QQ: 2881505695, 2881505696

邮箱: mlbio\_cn@yeah.net

网址: www.mlbio.cn