

Anti-FAM177B antibody

Cat. No. ml163875
Package 25 µl/100 µl/200 µl
Storage -20°C, pH7.4 PBS, 0.05% NaN₃, 40% Glycerol

Product overview

Description Anti-FAM177B rabbit polyclonal antibody
Applications ELISA, WB, IHC
Immunogen Synthetic peptide of human FAM177B
Reactivity Human, Mouse
Content 2.46 mg/ml
Host species Rabbit
Ig class Immunogen-specific rabbit IgG
Purification Antigen affinity purification

Target information

Symbol FAM177B
Full name family with sequence similarity 177 member B
Synonyms
Swissprot A6PVY3

Target Background

The function of this protein remains unknown.

订购热线: 4008-898-798

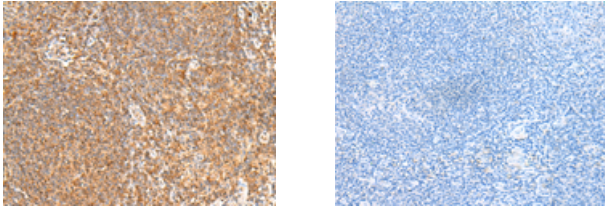
Applications

Immunohistochemistry

Predicted cell location: Cytoplasm

Positive control: Human tonsil

Recommended dilution: 50-300



The image on the left is immunohistochemistry of paraffin-embedded Human tonsil tissue using ml163875(FAM177B Antibody) at dilution 1/75, on the right is treated with synthetic peptide. (Original magnification: $\times 200$)

Western blotting

Predicted band size: 18 kDa

Positive control: Mouse small intestines tissue lysate

Recommended dilution: 200-1000

Gel: 12%SDS-PAGE

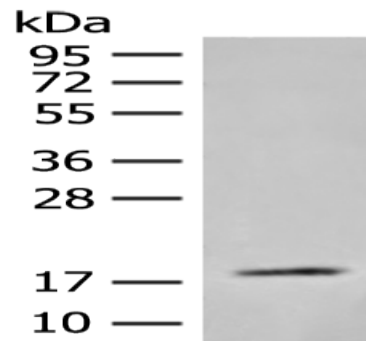
Lysate: 40 μ g

Lane: Mouse small intestines tissue lysate

Primary antibody: ml163875(FAM177B Antibody) at dilution 1/300

Secondary antibody: Goat anti rabbit IgG at 1/8000 dilution

Exposure time: 2 minutes



ELISA

Recommended dilution: 5000-10000

联系电话: 4008-898-798, 021-61725725

联系QQ: 2881505695, 2881505696

邮箱: mlbio_cn@yeah.net

网址: www.mlbio.cn