

Anti-GUCA1B antibody

| | |
|-----------------|---|
| Cat. No. | ml163974 |
| Package | 25 µl/100 µl/200 µl |
| Storage | -20°C, pH7.4 PBS, 0.05% NaN ₃ , 40% Glycerol |

Product overview

| | |
|---------------------|--|
| Description | Anti-GUCA1B rabbit polyclonal antibody |
| Applications | ELISA, WB, IHC |
| Immunogen | Synthetic peptide of human GUCA1B |
| Reactivity | Human, Mouse |
| Content | 1.38 mg/ml |
| Host species | Rabbit |
| Ig class | Immunogen-specific rabbit IgG |
| Purification | Antigen affinity purification |

Target information

| | |
|------------------|--------------------------------|
| Symbol | GUCA1B |
| Full name | guanylate cyclase activator 1B |
| Synonyms | RP48; GCAP2; GUCA2 |
| Swissprot | Q9UMX6 |

Target Background

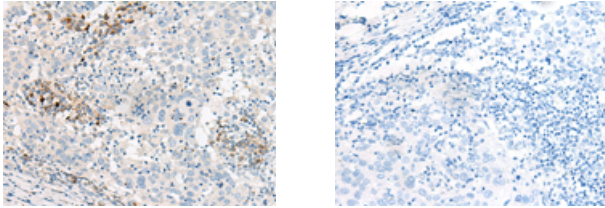
The protein encoded by this gene is a calcium-binding protein that activates photoreceptor guanylate cyclases. This gene may have arisen due to a gene duplication event since there is a highly similar gene clustered with it on chromosome 6. Mutations in this gene can cause a form of retinitis pigmentosa.

订购热线: 4008-898-798

Applications

Immunohistochemistry

Predicted cell location: Cell membrane
Positive control: Human cervical cancer
Recommended dilution: 30-150



The image on the left is immunohistochemistry of paraffin-embedded Human cervical cancer tissue using ml163974(GUCA1B Antibody) at dilution 1/45, on the right is treated with synthetic peptide. (Original magnification: $\times 200$)

Western blotting

Predicted band size: 23 kDa
Positive control: Mouse eye tissue lysate
Recommended dilution: 500-2000

Gel: 12% SDS-PAGE

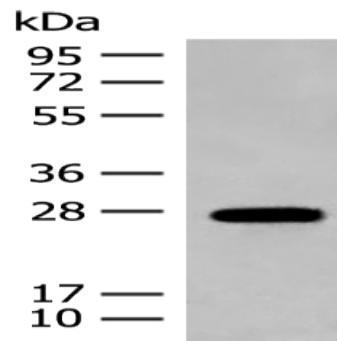
Lysate: 40 μ g

Lane: Mouse eye tissue lysate

Primary antibody: ml163974(GUCA1B Antibody) at dilution 1/500

Secondary antibody: Goat anti rabbit IgG at 1/8000 dilution

Exposure time: 10 seconds



ELISA

Recommended dilution: 5000-10000

联系电话: 4008-898-798, 021-61725725

联系QQ: 2881505695, 2881505696

邮箱: mlbio_cn@yeah.net

网址: www.mlbio.cn