

Anti-GP6 antibody

Cat. No.	ml164003
Package	25 µl/100 µl/200 µl
Storage	-20°C, pH7.4 PBS, 0.05% NaN ₃ , 40% Glycerol

Product overview

Description	Anti-GP6 rabbit polyclonal antibody
Applications	ELISA, WB, IHC
Immunogen	Synthetic peptide of human GP6
Reactivity	Human
Content	1.44 mg/ml
Host species	Rabbit
Ig class	Immunogen-specific rabbit IgG
Purification	Antigen affinity purification

Target information

Symbol	GP6
Full name	glycoprotein VI platelet
Synonyms	GPVI; GPVI; BDPLT11
Swissprot	Q9HCN6

Target Background

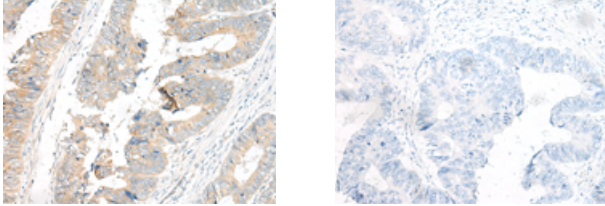
This gene encodes a platelet membrane glycoprotein of the immunoglobulin superfamily. The encoded protein is a receptor for collagen and plays a critical role in collagen-induced platelet aggregation and thrombus formation. The encoded protein forms a complex with the Fc receptor gamma-chain that initiates the platelet activation signaling cascade upon collagen binding. Mutations in this gene are a cause of platelet-type bleeding disorder-11 (BDPLT11). Alternatively spliced transcript variants encoding multiple isoforms have been observed for this gene.

订购热线: 4008-898-798

Applications

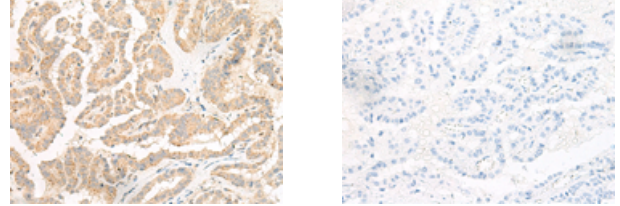
Immunohistochemistry

Predicted cell location: Cell membrane
Positive control: Human colorectal cancer
Recommended dilution: 50-300



The image on the left is immunohistochemistry of paraffin-embedded Human colorectal cancer tissue using ml164003(GP6 Antibody) at dilution 1/50, on the right is treated with synthetic peptide. (Original magnification: $\times 200$)

Predicted cell location: Cell membrane
Positive control: Human thyroid cancer
Recommended dilution: 50-300

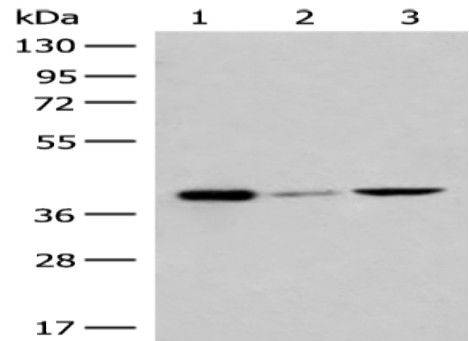


The image on the left is immunohistochemistry of paraffin-embedded Human thyroid cancer tissue using ml164003(GP6 Antibody) at dilution 1/50, on the right is treated with synthetic peptide. (Original magnification: $\times 200$)

Western blotting

Predicted band size: 37 kDa
Positive control: K562, Jurkat and 293T cell lysates
Recommended dilution: 200-1000

Gel: 8%SDS-PAGE
Lysate: 40 μ g
Lane 1-3: K562, Jurkat and 293T cell lysates
Primary antibody: ml164003(GP6 Antibody) at dilution 1/250
Secondary antibody: Goat anti rabbit IgG at 1/8000 dilution
Exposure time: 5 minutes



ELISA

Recommended dilution: 5000-10000

联系电话: 4008-898-798, 021-61725725

联系QQ: 2881505695, 2881505696

邮箱: mlbio_cn@yeah.net

网址: www.mlbio.cn