

Anti-GPR119 antibody

Cat. No.	ml164021
Package	25 µl/100 µl/200 µl
Storage	-20°C, pH7.4 PBS, 0.05% NaN ₃ , 40% Glycerol

Product overview

Description	Anti-GPR119 rabbit polyclonal antibody
Applications	ELISA, WB, IHC
Immunogen	Synthetic peptide of human GPR119
Reactivity	Human
Content	1.62 mg/ml
Host species	Rabbit
Ig class	Immunogen-specific rabbit IgG
Purification	Antigen affinity purification

Target information

Symbol	GPR119
Full name	G protein-coupled receptor 119
Synonyms	GPCR2
Swissprot	Q8TDV5

Target Background

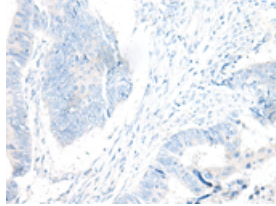
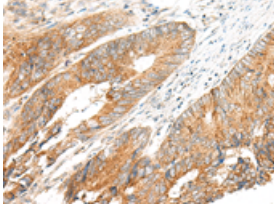
This gene encodes a member of the rhodopsin subfamily of G-protein-coupled receptors that is expressed in the pancreas and gastrointestinal tract. The encoded protein is activated by lipid amides including lysophosphatidylcholine and oleoylethanolamide and may be involved in glucose homeostasis. This protein is a potential drug target in the treatment of type 2 diabetes.

订购热线: 4008-898-798

Applications

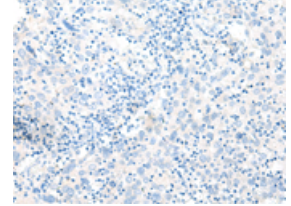
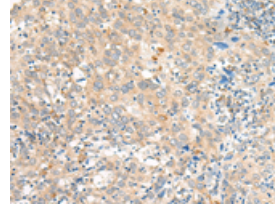
Immunohistochemistry

Predicted cell location: Cell membrane
Positive control: Human colorectal cancer
Recommended dilution: 50-300



The image on the left is immunohistochemistry of paraffin-embedded Human colorectal cancer tissue using ml164021(GPR119 Antibody) at dilution 1/55, on the right is treated with synthetic peptide. (Original magnification: $\times 200$)

Predicted cell location: Cell membrane
Positive control: Human cervical cancer
Recommended dilution: 50-300



The image on the left is immunohistochemistry of paraffin-embedded Human cervical cancer tissue using ml164021(GPR119 Antibody) at dilution 1/55, on the right is treated with synthetic peptide. (Original magnification: $\times 200$)

Western blotting

Predicted band size: 37 kDa
Positive control: K562 cell lysate
Recommended dilution: 200-1000

Gel: 8%SDS-PAGE

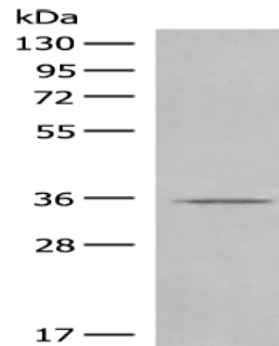
Lysate: 40 μ g

Lane: K562 cell lysate

Primary antibody: ml164021(GPR119 Antibody) at dilution 1/200

Secondary antibody: Goat anti rabbit IgG at 1/8000 dilution

Exposure time: 10 minutes



ELISA

Recommended dilution: 5000-10000

联系电话: 4008-898-798, 021-61725725

联系QQ: 2881505695, 2881505696

邮箱: mlbio_cn@yeah.net

网址: www.mlbio.cn