

## Anti-GPR22 antibody

<b>Cat. No.</b>	ml164035
<b>Package</b>	25 µl/100 µl/200 µl
<b>Storage</b>	-20°C, pH7.4 PBS, 0.05% NaN <sub>3</sub> , 40% Glycerol

### Product overview

<b>Description</b>	Anti-GPR22 rabbit polyclonal antibody
<b>Applications</b>	ELISA, WB, IHC
<b>Immunogen</b>	Synthetic peptide of human GPR22
<b>Reactivity</b>	Human, Mouse
<b>Content</b>	1.5 mg/ml
<b>Host species</b>	Rabbit
<b>Ig class</b>	Immunogen-specific rabbit IgG
<b>Purification</b>	Antigen affinity purification

### Target information

<b>Symbol</b>	GPR22
<b>Full name</b>	G protein-coupled receptor 22
<b>Synonyms</b>	
<b>Swissprot</b>	Q99680

### Target Background

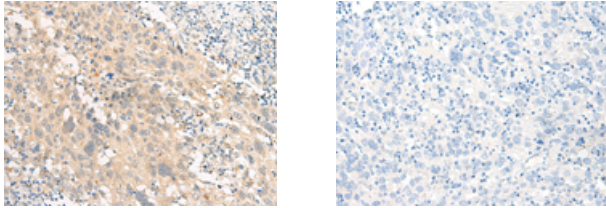
This gene is a member of the G-protein coupled receptor 1 family and encodes a multi-pass membrane protein.

订购热线: 4008-898-798

### Applications

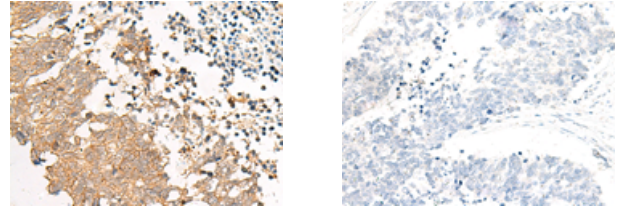
#### Immunohistochemistry

Predicted cell location: Cell membrane  
Positive control: Human cervical cancer  
Recommended dilution: 40-200



The image on the left is immunohistochemistry of paraffin-embedded Human cervical cancer tissue using ml164035(GPR22 Antibody) at dilution 1/50, on the right is treated with synthetic peptide. (Original magnification:  $\times 200$ )

Predicted cell location: Cell membrane  
Positive control: Human lung cancer  
Recommended dilution: 40-200

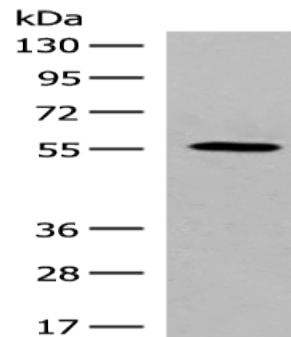


The image on the left is immunohistochemistry of paraffin-embedded Human lung cancer tissue using ml164035(GPR22 Antibody) at dilution 1/50, on the right is treated with synthetic peptide. (Original magnification:  $\times 200$ )

#### Western blotting

Predicted band size: 49 kDa  
Positive control: HepG2 cell lysate  
Recommended dilution: 500-2000

Gel: 8%SDS-PAGE  
Lysate: 40  $\mu$ g  
Lane: HepG2 cell lysate  
Primary antibody: ml164035(GPR22 Antibody) at dilution 1/500  
Secondary antibody: Goat anti rabbit IgG at 1/8000 dilution  
Exposure time: 10 seconds



#### ELISA

Recommended dilution: 5000-10000

联系电话: 4008-898-798, 021-61725725

联系QQ: 2881505695, 2881505696

邮箱: mlbio\_cn@yeah.net

网址: www.mlbio.cn