

Anti-ROMO1 antibody

Cat. No.	ml164043
Package	25 µl/100 µl/200 µl
Storage	-20°C, pH7.4 PBS, 0.05% NaN ₃ , 40% Glycerol

Product overview

Description	Anti-ROMO1 rabbit polyclonal antibody
Applications	ELISA, WB, IHC
Immunogen	Synthetic peptide of human ROMO1
Reactivity	Human, Mouse
Content	0.66 mg/ml
Host species	Rabbit
Ig class	Immunogen-specific rabbit IgG
Purification	Antigen affinity purification

Target information

Symbol	ROMO1
Full name	reactive oxygen species modulator 1
Synonyms	MTGM; MTGMP; C20orf52; bA353C18.2
Swissprot	P60602

Target Background

The protein encoded by this gene is a mitochondrial membrane protein that is responsible for increasing the level of reactive oxygen species (ROS) in cells. The protein also has antimicrobial activity against a variety of bacteria by inducing bacterial membrane breakage.

订购热线: 4008-898-798

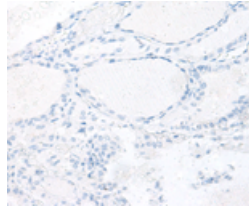
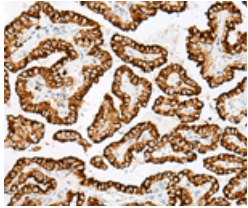
Applications

Immunohistochemistry

Predicted cell location: Cell membrane

Positive control: Human thyroid cancer

Recommended dilution: 30-150

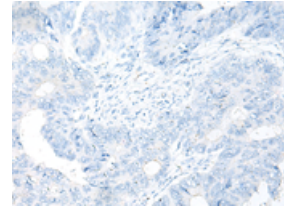
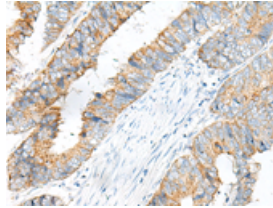


The image on the left is immunohistochemistry of paraffin-embedded Human thyroid cancer tissue using ml164043(ROMO1 Antibody) at dilution 1/25, on the right is treated with synthetic peptide. (Original magnification: ×200)

Predicted cell location: Cell membrane

Positive control: Human colorectal cancer

Recommended dilution: 30-150



The image on the left is immunohistochemistry of paraffin-embedded Human colorectal cancer tissue using ml164043(ROMO1 Antibody) at dilution 1/25, on the right is treated with synthetic peptide. (Original magnification: ×200)

Western blotting

Predicted band size: 8 kDa

Positive control: Mouse heart tissue, Human heart tissue, HEPG2 cell, PC-3 cell, 231 cell and 293T cell lysates

Recommended dilution: 200-1000

Gel: 12%SDS-PAGE

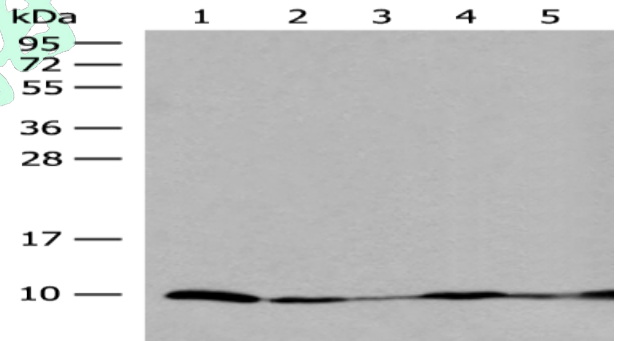
Lysate: 40 μg

Lane 1-6: Mouse heart tissue, Human heart tissue, HEPG2 cell, PC-3 cell, 231 cell and 293T cell lysates

Primary antibody: ml164043(ROMO1 Antibody) at dilution 1/200

Secondary antibody: Goat anti rabbit IgG at 1/8000 dilution

Exposure time: 2 minutes



ELISA

Recommended dilution: 5000-10000

联系电话: 4008-898-798, 021-61725725

联系QQ: 2881505695, 2881505696

邮箱: mlbio_cn@yeah.net

网址: www.mlbio.cn