

Anti-LDHA antibody

Cat. No.	ml164055
Package	25 µl/100 µl/200 µl
Storage	-20°C, pH7.4 PBS, 0.05% NaN ₃ , 40% Glycerol

Product overview

Description	Anti-LDHA rabbit polyclonal antibody
Applications	ELISA, WB, IHC
Immunogen	Synthetic peptide of human LDHA
Reactivity	Human, Mouse, Rat
Content	0.72 mg/ml
Host species	Rabbit
Ig class	Immunogen-specific rabbit IgG
Purification	Antigen affinity purification

Target information

Symbol	LDHA
Full name	lactate dehydrogenase A
Synonyms	LDHM; GSD11; PIG19; HEL-S-133P
Swissprot	P00338

Target Background

The protein encoded by this gene catalyzes the conversion of L-lactate and NAD to pyruvate and NADH in the final step of anaerobic glycolysis. The protein is found predominantly in muscle tissue and belongs to the lactate dehydrogenase family. Mutations in this gene have been linked to exertional myoglobinuria. Multiple transcript variants encoding different isoforms have been found for this gene. The human genome contains several non-transcribed pseudogenes of this gene.

订购热线: 4008-898-798

Applications

Immunohistochemistry

Predicted cell location: Cytoplasm and Nucleus

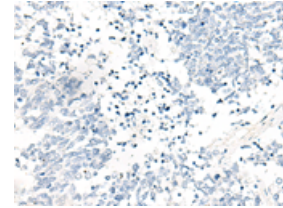
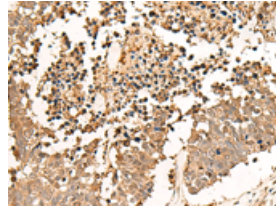
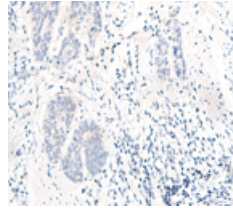
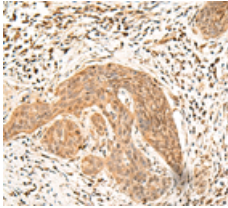
Positive control: Human esophagus cancer

Recommended dilution: 30-150

Predicted cell location: Cytoplasm and Nucleus

Positive control: Human lung cancer

Recommended dilution: 30-150



The image on the left is immunohistochemistry of paraffin-embedded Human esophagus cancer tissue using ml164055(LDHA Antibody) at dilution 1/25, on the right is treated with synthetic peptide. (Original magnification: $\times 200$)

The image on the left is immunohistochemistry of paraffin-embedded Human lung cancer tissue using ml164055(LDHA Antibody) at dilution 1/25, on the right is treated with synthetic peptide. (Original magnification: $\times 200$)

Western blotting

Predicted band size: 37 kDa

Positive control: HeLa, 231, Jurkat, NIH/3T3, 293T and A375 cell lysates

Recommended dilution: 500-2000

Gel: 8% SDS-PAGE

Lysate: 40 μ g

Lane 1-6: HeLa, 231, Jurkat, NIH/3T3, 293T and A375 cell lysates

Primary antibody: ml164055(LDHA Antibody) at dilution 1/250

Secondary antibody: Goat anti rabbit IgG at 1/8000 dilution

Exposure time: 5 seconds

kDa

130

95

72

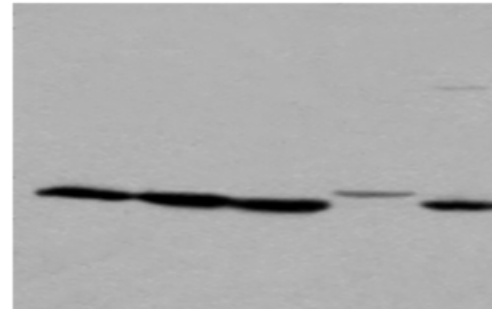
55

36

28

17

1 2 3 4 5



ELISA

Recommended dilution: 5000-10000

联系电话: 4008-898-798, 021-61725725

联系QQ: 2881505695, 2881505696

邮箱: mlbio_cn@yeah.net

网址: www.mlbio.cn