

Anti-TAAR2 antibody

Cat. No.	ml164070
Package	25 µl/100 µl/200 µl
Storage	-20°C, pH7.4 PBS, 0.05% NaN ₃ , 40% Glycerol

Product overview

Description	Anti-TAAR2 rabbit polyclonal antibody
Applications	ELISA, WB, IHC
Immunogen	Synthetic peptide of human TAAR2
Reactivity	Human, Mouse, Rat
Content	1.14 mg/ml
Host species	Rabbit
Ig class	Immunogen-specific rabbit IgG
Purification	Antigen affinity purification

Target information

Symbol	TAAR2
Full name	trace amine associated receptor 2 (gene/pseudogene)
Synonyms	GPR58; taR-2
Swissprot	Q9P1P5

Target Background

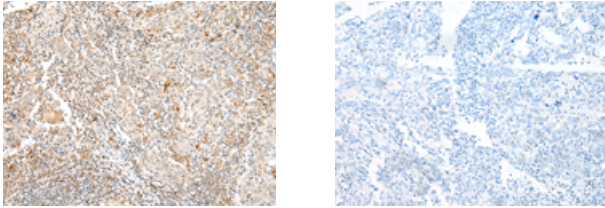
Not expressed in the pons, thalamus, hypothalamus, hippocampus, caudate, putamen, frontal cortex, basal forebrain, midbrain or liver.

订购热线: 4008-898-798

Applications

Immunohistochemistry

Predicted cell location: Cell membrane
Positive control: Human cervical cancer
Recommended dilution: 30-150

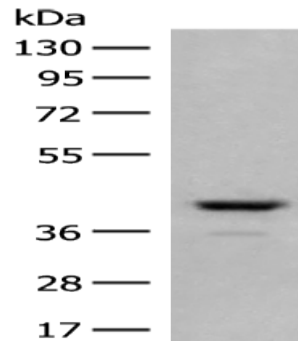


The image on the left is immunohistochemistry of paraffin-embedded Human cervical cancer tissue using ml164070(TAAR2 Antibody) at dilution 1/40, on the right is treated with synthetic peptide. (Original magnification: $\times 200$)

Western blotting

Predicted band size: 40 kDa
Positive control: Human fetal brain tissue lysate
Recommended dilution: 500-2000

Gel: 8%SDS-PAGE
Lysate: 40 μ g
Lane: Human fetal brain tissue lysate
Primary antibody: ml164070(TAAR2 Antibody) at dilution 1/350
Secondary antibody: Goat anti rabbit IgG at 1/8000 dilution
Exposure time: 1 minute



ELISA

Recommended dilution: 5000-10000

联系电话: 4008-898-798, 021-61725725

联系QQ: 2881505695, 2881505696

邮箱: mlbio_cn@yeah.net

网址: www.mlbio.cn