

Anti-GPRC6A antibody

Cat. No.	ml164095
Package	25 µl/100 µl/200 µl
Storage	-20°C, pH7.4 PBS, 0.05% NaN ₃ , 40% Glycerol

Product overview

Description	Anti-GPRC6A rabbit polyclonal antibody
Applications	ELISA, WB, IHC
Immunogen	Synthetic peptide of human GPRC6A
Reactivity	Human
Content	0.78 mg/ml
Host species	Rabbit
Ig class	Immunogen-specific rabbit IgG
Purification	Antigen affinity purification

Target information

Symbol	GPRC6A
Full name	G protein-coupled receptor class C group 6 member A
Synonyms	GPCR; bA86F4.3
Swissprot	Q5T6X5

Target Background

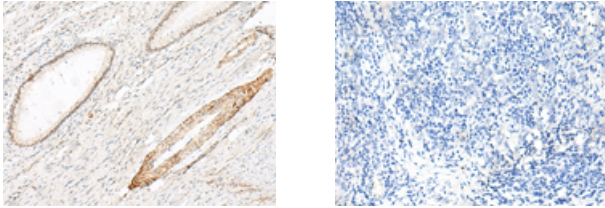
Members of family C of the G protein-coupled receptor (GPCR) superfamily, such as GPRC6A, are characterized by an evolutionarily conserved amino acid-sensing motif linked to an intramembranous 7-transmembrane loop region. Several members of GPCR family C, including GPRC6A, also have a long N-terminal domain (summary by Pi et al., 2005 [PubMed 16199532]).

订购热线: 4008-898-798

Applications

Immunohistochemistry

Predicted cell location: Cell membrane
Positive control: Human cervical cancer
Recommended dilution: 20-100

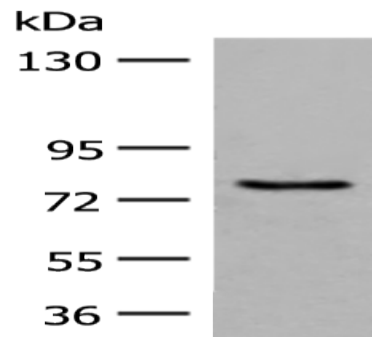


The image on the left is immunohistochemistry of paraffin-embedded Human cervical cancer tissue using ml164095(GPRC6A Antibody) at dilution 1/30, on the right is treated with synthetic peptide. (Original magnification: $\times 200$)

Western blotting

Predicted band size: 105 kDa
Positive control: Hela cell lysate
Recommended dilution: 200-1000

Gel: 6%SDS-PAGE
Lysate: 40 μ g
Lane: Hela cell lysate
Primary antibody: ml164095(GPRC6A Antibody) at dilution 1/250
Secondary antibody: Goat anti rabbit IgG at 1/8000 dilution
Exposure time: 20 seconds



ELISA

Recommended dilution: 5000-10000

联系电话: 4008-898-798, 021-61725725

联系QQ: 2881505695, 2881505696

邮箱: mlbio_cn@yeah.net

网址: www.mlbio.cn