

Anti-GTF2H4 antibody

Cat. No.	ml164138
Package	25 µl/100 µl/200 µl
Storage	-20°C, pH7.4 PBS, 0.05% NaN ₃ , 40% Glycerol

Product overview

Description	Anti-GTF2H4 rabbit polyclonal antibody
Applications	ELISA, WB, IHC
Immunogen	Synthetic peptide of human GTF2H4
Reactivity	Human, Mouse
Content	1.02 mg/ml
Host species	Rabbit
Ig class	Immunogen-specific rabbit IgG
Purification	Antigen affinity purification

Target information

Symbol	GTF2H4
Full name	general transcription factor IIH subunit 4
Synonyms	P52; TFB2; TFIIH
Swissprot	Q92759

Target Background

Component of the core-TFIIH basal transcription factor involved in nucleotide excision repair (NER) of DNA and, when complexed to CAK, in RNA transcription by RNA polymerase II.

订购热线: 4008-898-798

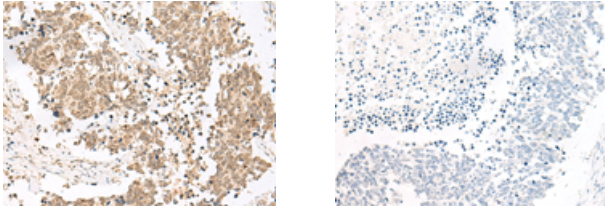
Applications

Immunohistochemistry

Predicted cell location: Nucleus

Positive control: Human lung cancer

Recommended dilution: 40-200

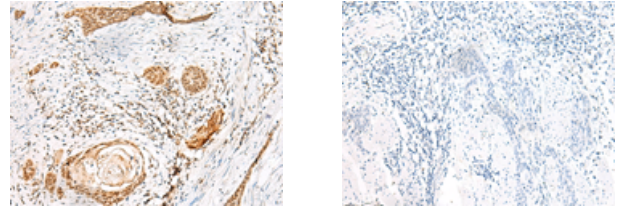


The image on the left is immunohistochemistry of paraffin-embedded Human lung cancer tissue using ml164138(GTF2H4 Antibody) at dilution 1/35, on the right is treated with synthetic peptide. (Original magnification: ×200)

Predicted cell location: Nucleus

Positive control: Human esophagus cancer

Recommended dilution: 40-200



The image on the left is immunohistochemistry of paraffin-embedded Human esophagus cancer tissue using ml164138(GTF2H4 Antibody) at dilution 1/35, on the right is treated with synthetic peptide. (Original magnification: ×200)

Western blotting

Predicted band size: 52 kDa

Positive control: Human heart tissue lysate

Recommended dilution: 200-1000

Gel: 8%SDS-PAGE

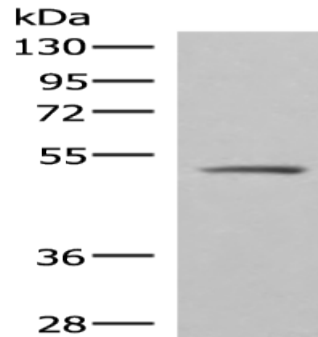
Lysate: 40 µg

Lane: Human heart tissue lysate

Primary antibody: ml164138(GTF2H4 Antibody) at dilution 1/400

Secondary antibody: Goat anti rabbit IgG at 1/8000 dilution

Exposure time: 2 minutes



ELISA

Recommended dilution: 5000-10000

联系电话: 4008-898-798, 021-61725725

联系QQ: 2881505695, 2881505696

邮箱: mlbio_cn@yeah.net

网址: www.mlbio.cn