

Anti-GUCA2A antibody

| | |
|-----------------|---|
| Cat. No. | ml164143 |
| Package | 25 µl/100 µl/200 µl |
| Storage | -20°C, pH7.4 PBS, 0.05% NaN ₃ , 40% Glycerol |

Product overview

| | |
|---------------------|--|
| Description | Anti-GUCA2A rabbit polyclonal antibody |
| Applications | ELISA, WB, IHC |
| Immunogen | Synthetic peptide of human GUCA2A |
| Reactivity | Human |
| Content | 1.32 mg/ml |
| Host species | Rabbit |
| Ig class | Immunogen-specific rabbit IgG |
| Purification | Antigen affinity purification |

Target information

| | |
|------------------|--------------------------------|
| Symbol | GUCA2A |
| Full name | guanylate cyclase activator 2A |
| Synonyms | GUCA2; STARA; GCAP-I |
| Swissprot | Q02747 |

Target Background

Endogenous activator of intestinal guanylate cyclase. It stimulates this enzyme through the same receptor binding region as the heat-stable enterotoxins.

订购热线: 4008-898-798

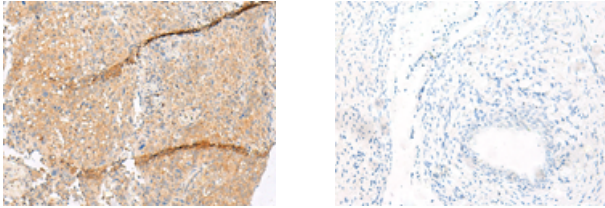
Applications

Immunohistochemistry

Predicted cell location: Secreted

Positive control: Human cervical cancer

Recommended dilution: 30-150



The image on the left is immunohistochemistry of paraffin-embedded Human cervical cancer tissue using ml164143(GUCA2A Antibody) at dilution 1/45, on the right is treated with synthetic peptide. (Original magnification: $\times 200$)

Western blotting

Predicted band size: 12 kDa

Positive control: Mouse small intestines tissue and K562 cell lysates

Recommended dilution: 200-1000

Gel: 12% SDS-PAGE

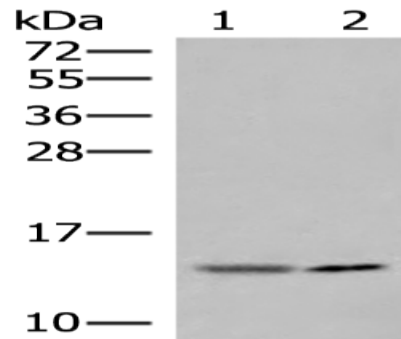
Lysate: 40 μ g

Lane 1-2: Mouse small intestines tissue and K562 cell lysates

Primary antibody: ml164143(GUCA2A Antibody) at dilution 1/550

Secondary antibody: Goat anti rabbit IgG at 1/8000 dilution

Exposure time: 10 minutes



ELISA

Recommended dilution: 5000-10000

联系电话: 4008-898-798, 021-61725725

联系QQ: 2881505695, 2881505696

邮箱: mlbio_cn@yeah.net

网址: www.mlbio.cn